

The background is a light beige topographic map with intricate grey contour lines. A blue dashed line, representing a trail or path, winds across the right side of the image. The text is centered in the upper half.

Community-Utility Partnerships: Traversing Peaks and Valleys

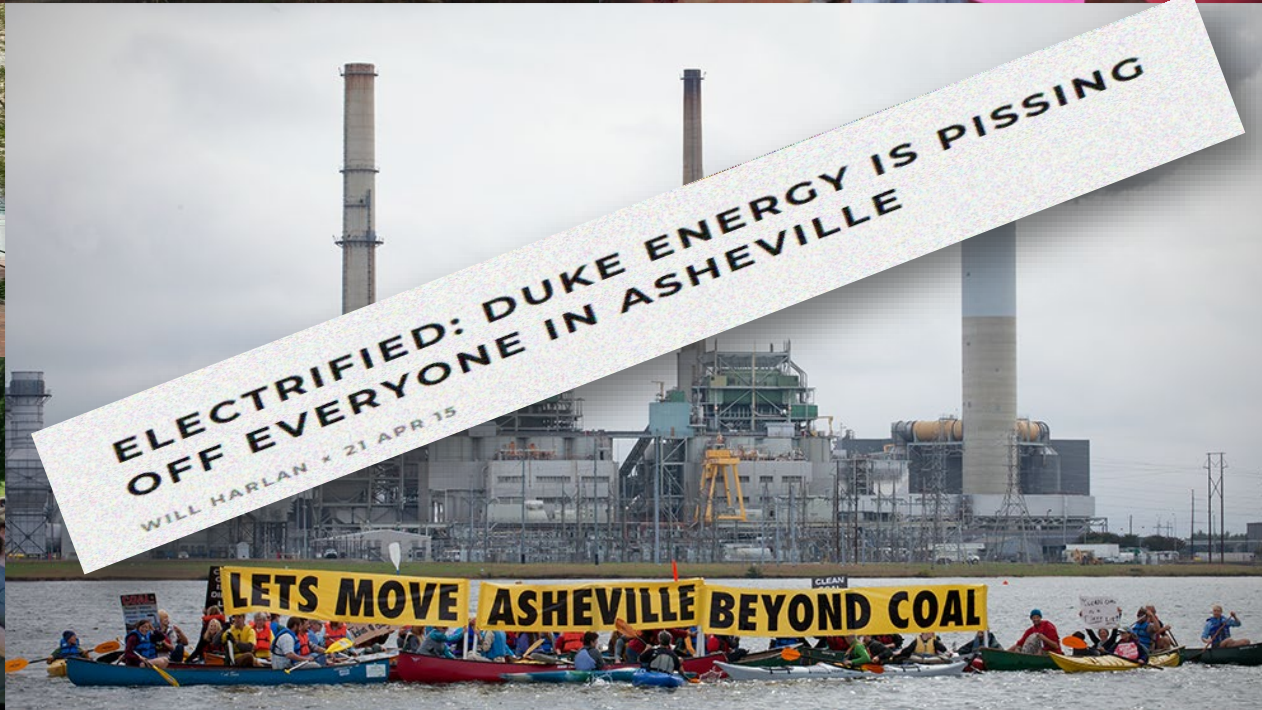
**Hon. Julie Mayfield, Mountain True
Jason Walls, Duke Energy**

The Recipe - What's Really Important?



Common
Trust
Commitment
Transparency
Learn
Patience
Communication
Listen
Courage
Friendship
People-Matter
Honesty
Vision





A look back: Setting the Stage

2007 – Asheville adopts carbon reduction goal

Nov. 2012 – Files notice of intent to sue Duke Energy

2012 - 2015 – Asheville Beyond Coal Campaign

4/2013 – Jason and Julie meet for their coffee

2013 – Asheville adopts Clean Energy Resolution

2013 – County adopts carbon reduction plan

May 2015 – Duke Energy commits to close the coal plant and announces first modernization project

July - Oct. 2015 – Carolina Land Coalition Campaign

Relationship Transition

Nov. 2015 – Duke Energy listens and revises the plan:

- No new transmission lines
- Two 270-MW natural gas units
- 190 MW peaker unit to be built in 2023
- 5 MW battery storage
- 15 MW solar
- Partnership to delay or avoid the peaker unit

Feb. 2016 – Created Energy Innovation Task Force

April 2016 – Rocky Mountain Institute e-Lab Accelerator

2018-present – Blue Horizons Project

What Changed?

- Listened to the community.
- Took time to understand. *Understanding = Thinks + Feels*
- Willing to solve problems in a different way.
- Found areas of mutual agreement: solar, storage, retire coal, reliability, cost and replacing with local generation.
- Asked for help to solve the problem instead of asking for comments on a pre-solved solution.



People Matter

Honesty

Courage

Commitment

Patience

Ask / Listen / Learn

Communication / Transparency

Common Vision

Friendship

Trust is the Foundation