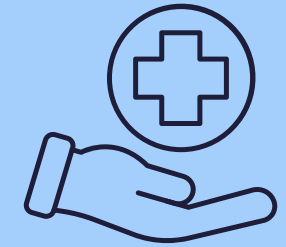
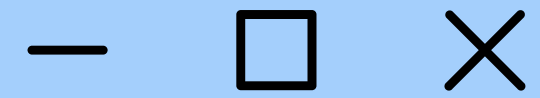
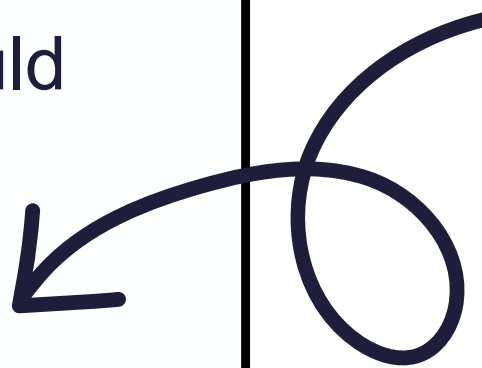


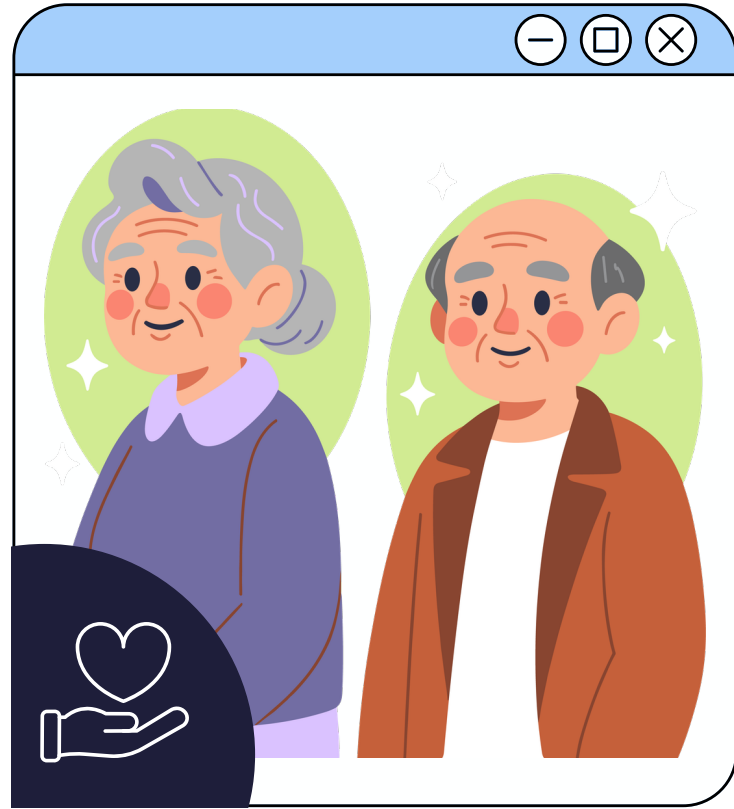


# What is PACE?



- For adults 55+ who need extra help at home.
- Personalized healthcare and support services with head -to -toe medical care, a great social center, rides to get here and to appointments, and help at home too.
- PACE covers all services that Medicare and Medicaid would normally cover PLUS anything else the care team determines medically necessary.





# Who does PACE Serve?



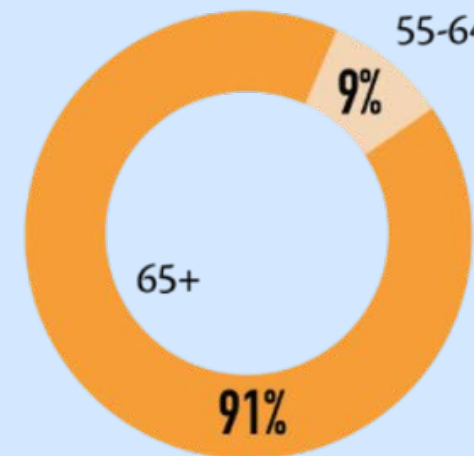
*PACE SERVES  
OUR SENIORS*

## 95% LIVE IN THE COMMUNITY

### Individuals must be:

- age 55 or older
- reside in a designated PACE service area
- be certified by their state as needing a nursing home -level of care
- be able to live safely in the community with support.

**77**  
Average age



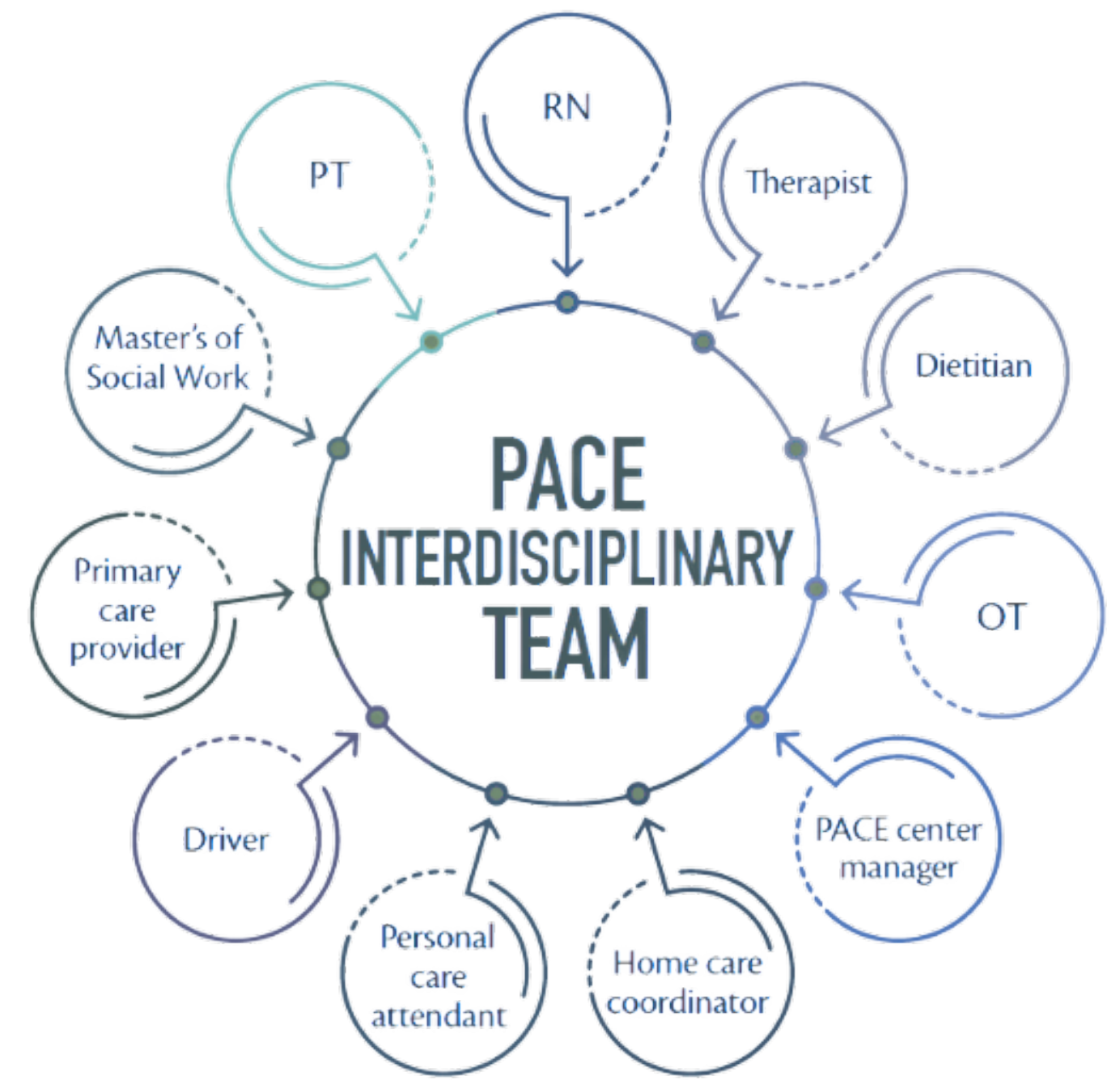
**66%** WOMEN  
MEN **34%**

# Meet Mr. Richard Johnson

“PACE has provided me with security and top -notch healthcare. I have never been at such peace of mind to know that whatever I need, I can count on my team.”

Richard Johnson

Senior TLC Participant Since July 2023

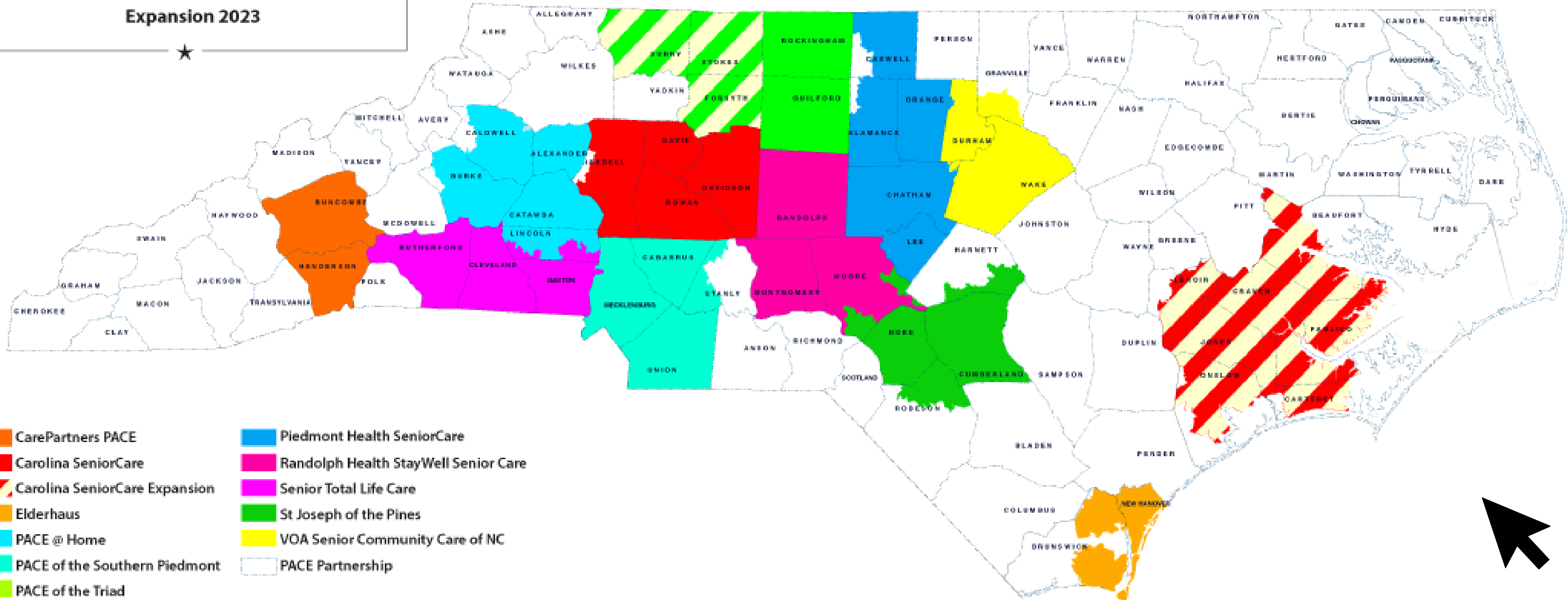




# Where is PACE?

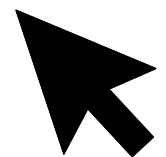


## PACE Organizations in NC Service Areas Expansion 2023



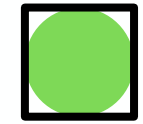
- |                               |                                      |
|-------------------------------|--------------------------------------|
| CarePartners PACE             | Piedmont Health SeniorCare           |
| Carolina SeniorCare           | Randolph Health StayWell Senior Care |
| Carolina SeniorCare Expansion | Senior Total Life Care               |
| Elderhaus                     | St Joseph of the Pines               |
| PACE @ Home                   | VOA Senior Community Care of NC      |
| PACE of the Southern Piedmont | PACE Partnership                     |
| PACE of the Triad             |                                      |
| PACE of the Triad Expansion   |                                      |

Those areas striped indicate future PACE expansion. They are not operational at this time.





# Why Does PACE Work?



- **Reduced Hospitalizations:** PACE participants experience lower rates of hospitalization and readmission compared to similar populations.
- **Lower - Cost Care Settings:** By supporting seniors at home rather than in skilled nursing facilities, PACE saves on average about \$6,000 per patient per year.
- **Capitated Payments:** Providers receive a fixed, monthly amount per participant, which incentivizes efficiency and proactive care to prevent expensive, acute health crises.
- **Comprehensive Management:** PACE assumes full financial risk for all services, including hospital and emergency room visits, encouraging them to keep patients healthy to avoid high -cost interventions.

