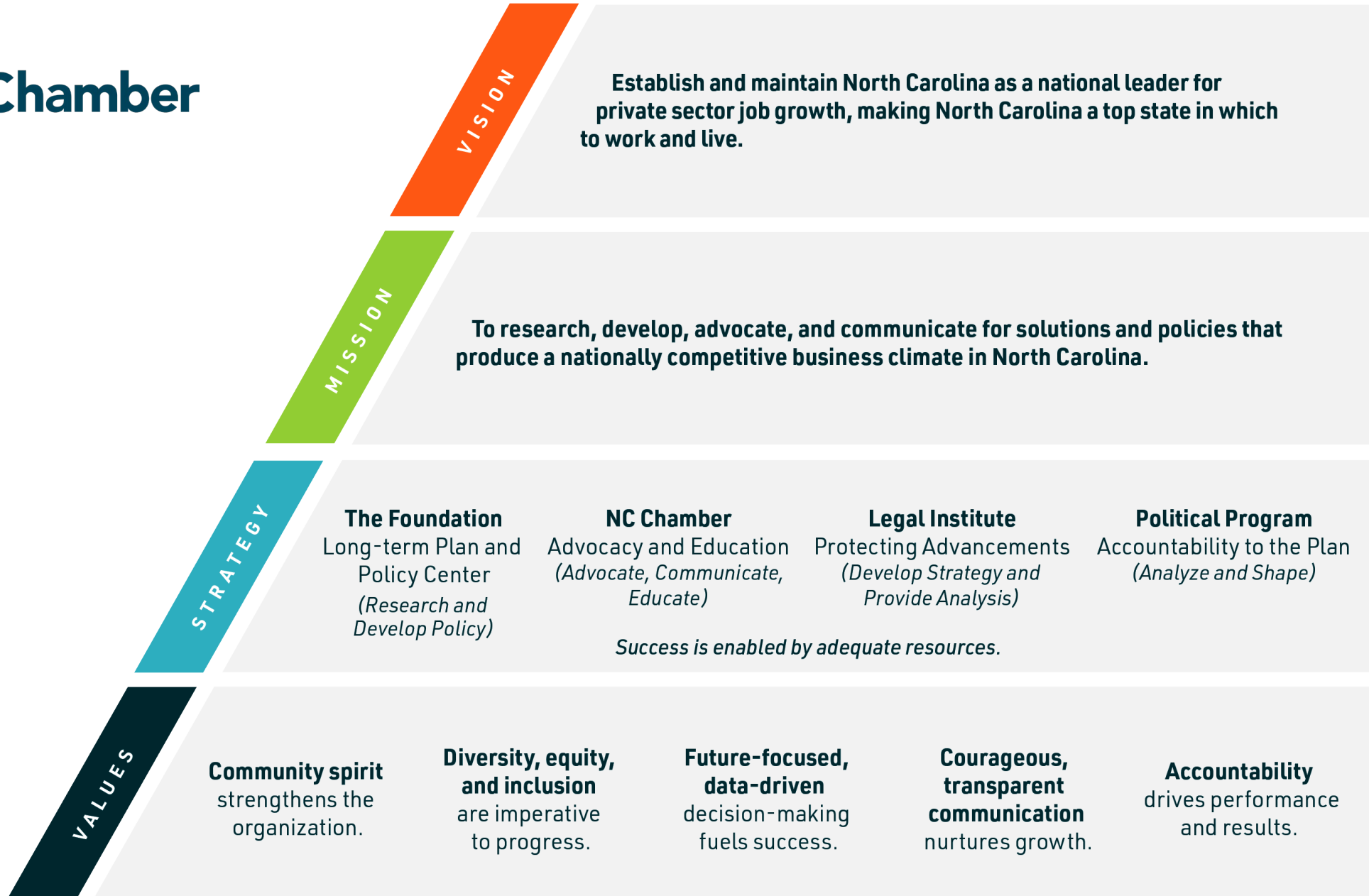




Leadership North Carolina

Gary J. Salamido
NC Chamber President & CEO
Wednesday, March 2, 2022



WE BELIEVE

Community spirit strengthens the organization.

Diversity, equity and inclusion are imperative to progress.

Future-focused, data-driven decision-making fuels success.

Courageous, transparent communication nurtures growth.

Accountability drives performance and results.



Diversity, equity, and inclusion are imperative to progress.

There will always be space for everyone to be heard and accepted.

Each person's presence and beliefs are respected and not merely tolerated. Their story is unique and yet a part of our community.



Diversity, equity, and inclusion are imperative to progress.

- We seek out and embrace a variety of thought, background, and culture.
- We maintain and adhere to the hiring practices established by HR.
- We condemn micro-aggressions, stereotyping, and uncivil dialogue.
- We value the uniqueness of individuals from all backgrounds, experiences, and castes.
- We establish a sense of belonging.
- We treat everyone equally.
- We provide a safe space to have hard conversations.
- We build relationships with everyone in the organization.



VISION 2030

VISION 2030 PILLARS



EDUCATION & TALENT
SUPPLY



COMPETITIVE BUSINESS
CLIMATE



INFRASTRUCTURE &
GROWTH LEADERSHIP



Institute for **Workforce Competitiveness**



Responding to our business community's workforce needs and focusing on NC's future talent supply, we launch Institute for Workforce Competitiveness in March 2022.



We want to know what's working across NC.

Contact us: gsalamido@ncchamber.com



Institute for Workforce Competitiveness will share success stories of workforce initiatives in North Carolina.



We want to find ways to scale these programs statewide.



NC Chamber

701 Corporate Center Drive
Suite 275
Raleigh, NC 27607

919-836-1400
ncchamber.com