

Asheville's Climate Justice Initiative

LEADERSHIP North Carolina

April 2022

Kiera Bulan, Sustainability Coordinator
Office of Sustainability



Overview

I. Asheville Sustainability Goals

- Climate Resilience
 - Climate Justice Initiative, Food Policy Action Plan
- 100% Renewable Energy Goal
- 50% Waste Reduction Goal
- Community-wide 100% Renewable Energy Goal
- 4% Carbon Reduction Goal

II. Asheville's Climate Justice Initiative

Climate Emergency

In January 2020 Asheville City Council declared a Climate Emergency. [Resolution 20-25](#) states that a Climate Justice Plan be created to consolidate the various separate sustainability goals and department initiatives.



Climate Justice Initiative



TEPEYAC
CONSULTING

PHASE I

Mapping climate vulnerability

Frontline 1:1 interviews

Story circles

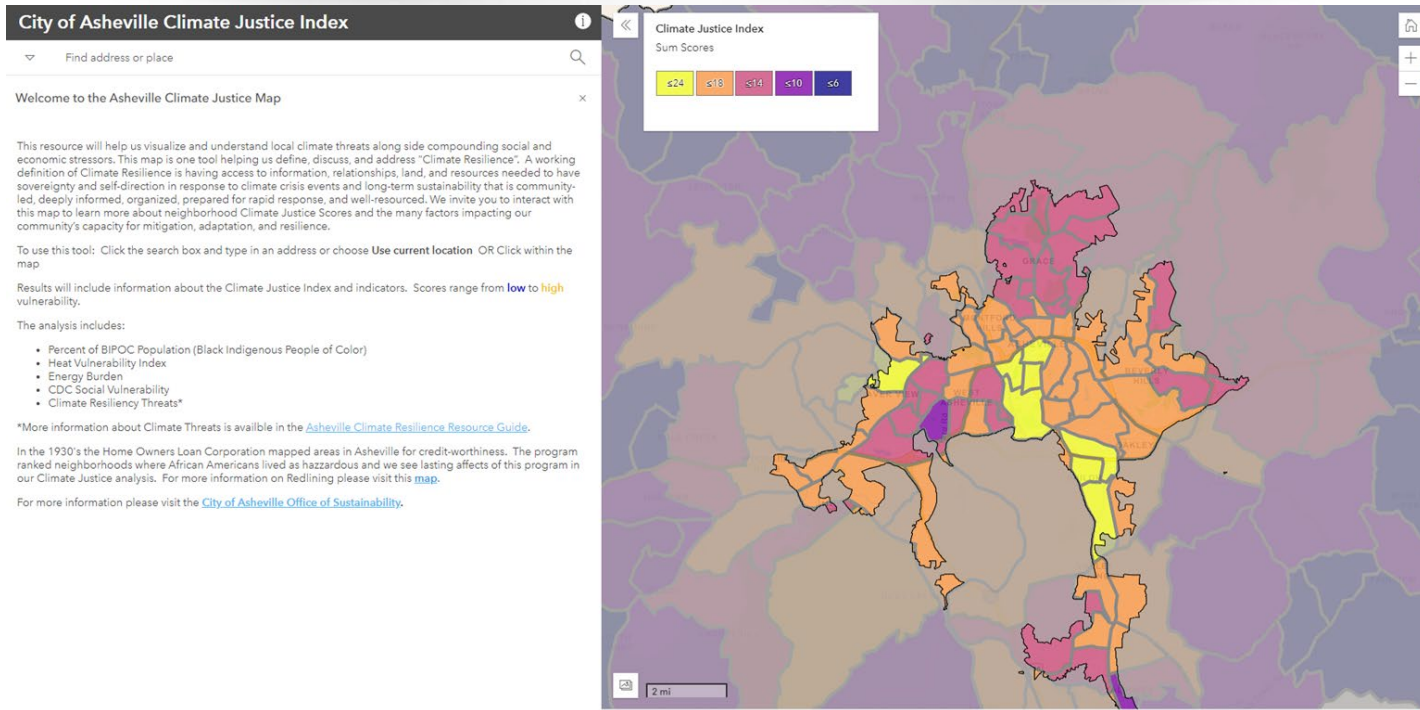
City of Asheville: Listening + Learning

PHASE II

Climate Justice Guide + Screening Tool

Voices of Our Youth Public Art Project

Climate Data Map



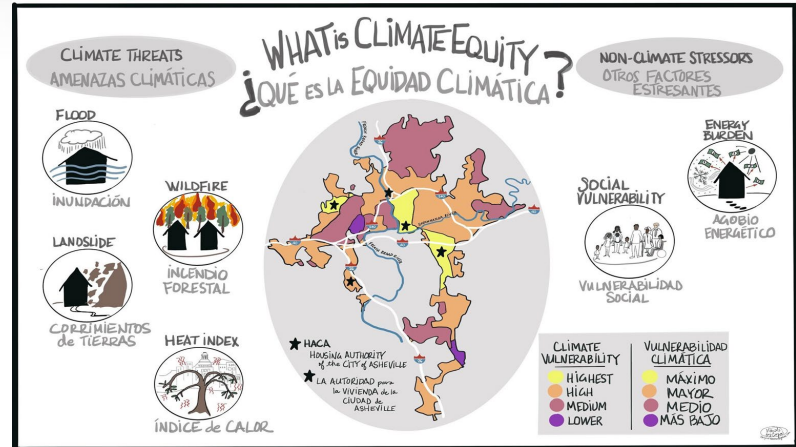
Voices from our Community

Community Resilience

- Economic power
- Healthy environments
- Strong social networks

Climate Justice Concerns

- Displacement
- Inequitable evacuation plans and emergency responses
- Impacts of structural racism
- Access to healthy food and transportation
- Lack of conversation about how to prepare and respond
- Lack of awareness of the impacts on BIPOC homes and neighborhoods



Climate Equity Strategies



- **Community-Led Resilience Hubs:** Establish community-based spaces already familiar to surrounding residents as a resource hub for the kinds of emergency response, evacuation, and mutual aid needed to survive climate and other crises.
- **Invest in a BIPOC Green Economy:** Invest in BIPOC communities through local contracting around retrofitting the City's infrastructure with renewable energy, supporting the establishment of small green businesses and cooperatives, and land sovereignty through land trusts and reparations.
- **Effectively Engaging Frontline Communities:** Address the divisions that exist between the City and BIPOC communities that exist due to a history of structural racism which, ultimately, exacerbate the impacts of climate change and create breakdowns in the communication of critical information about the issue.

Climate Justice Initiative

Asheville's Climate Justice Plan

- Defined Climate Justice and Climate Equity with BIPOC community members,
- Creation of the Climate Justice Data Map, and
- Created a Climate Justice Screening Tool to complement the work of the GARE Racial Toolkit + Asheville's adopted plans.
- Next steps - internal and community-facing implementation

