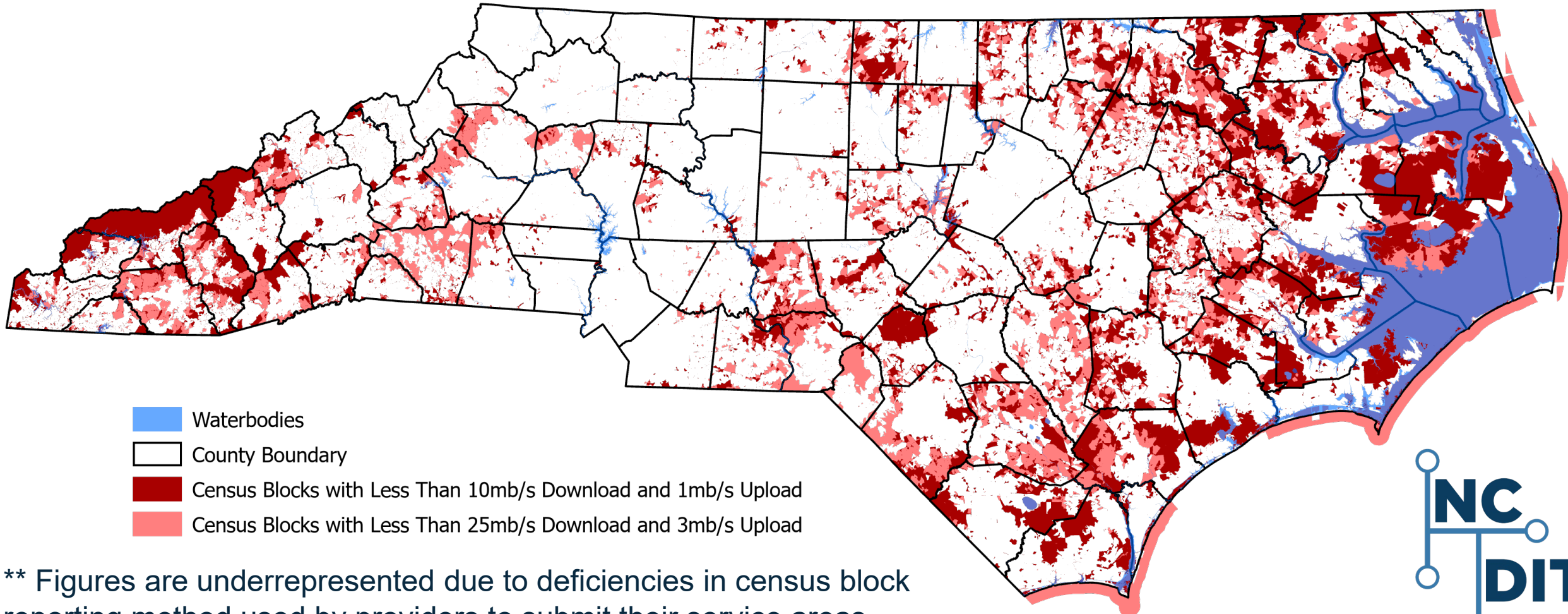


FCC Fixed Broadband Deployment Data

- Less Than 10/1 Service Availability – 79,955 Households**
- Less Than 25/3 Service Availability – 186,789 Households**



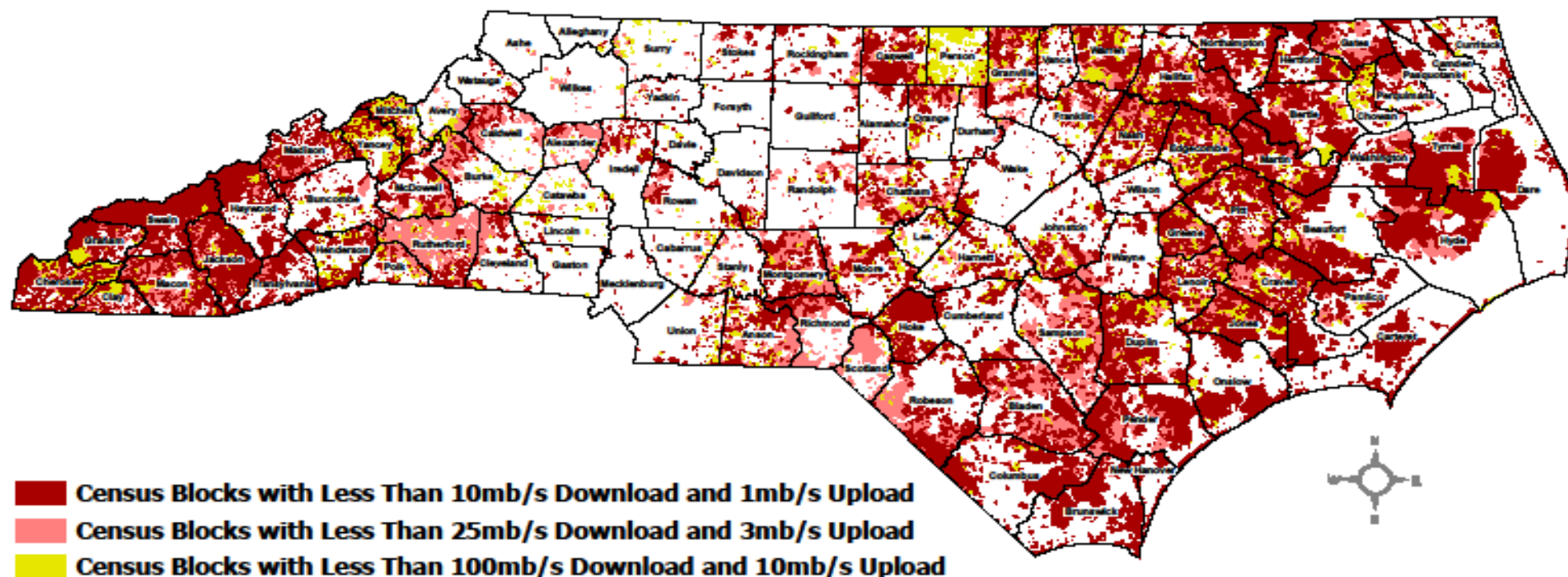
** Figures are underrepresented due to deficiencies in census block reporting method used by providers to submit their service areas.

North Carolina Broadband Service Inventory

Underserved Census Blocks Reporting only DSL, Satellite, or Less Than 25mb/s Download and 3mb/s Upload Service

Data derived from U.S. Federal Communications Commission Form 477 Data Release June 2020.

Note: A provider that reports deployment of a particular technology and bandwidth in a census block may not necessarily offer that service everywhere in the block.

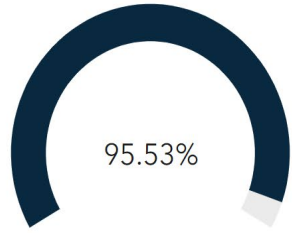


NC Broadband Availability Index

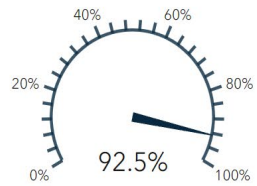
Select a category 2017 2018 2019

County: STATEWIDE

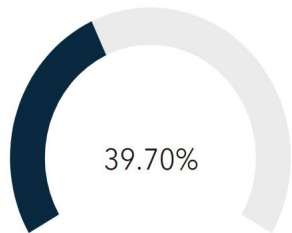
Percent Population with Available 25/3 Service



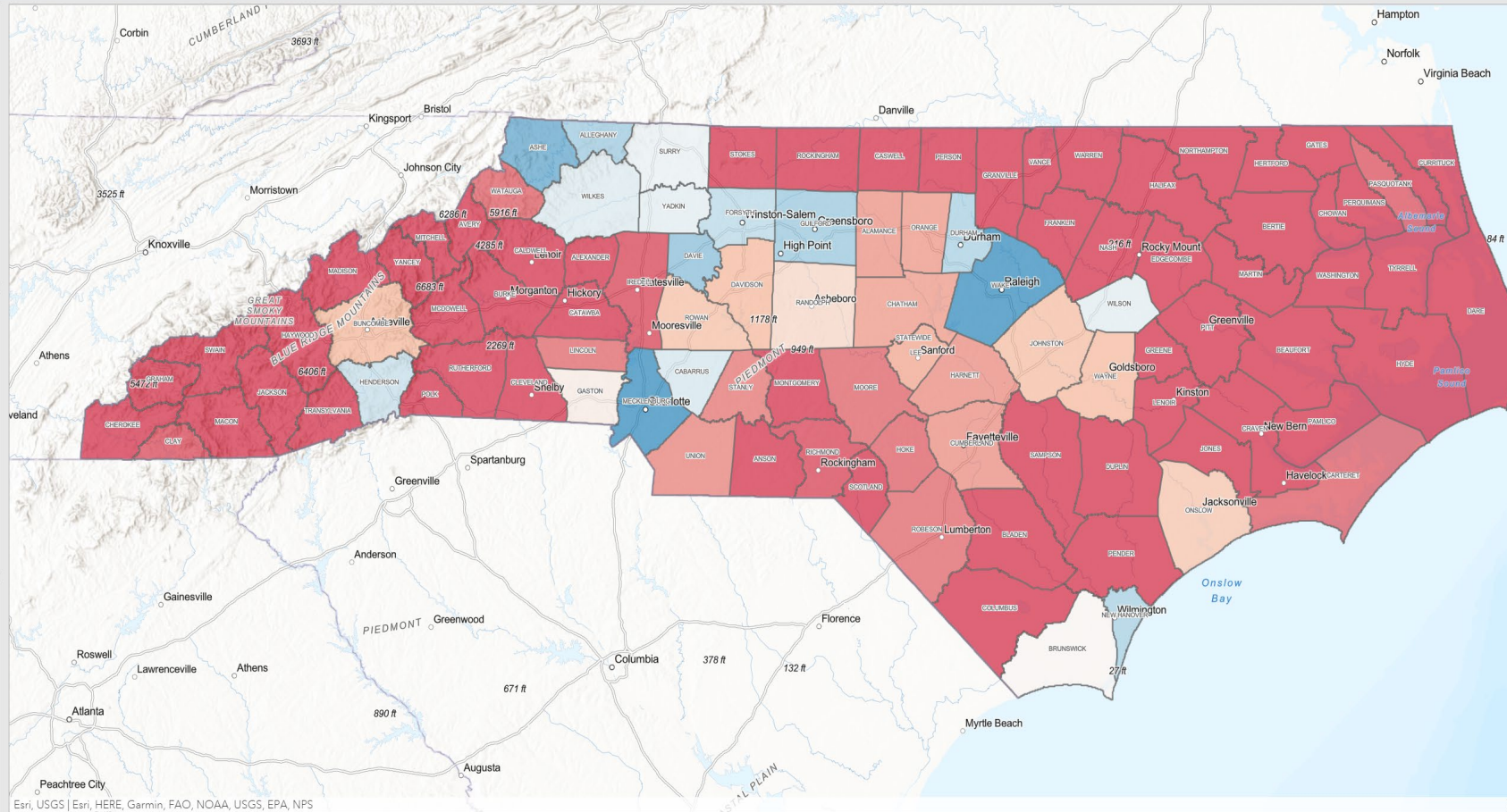
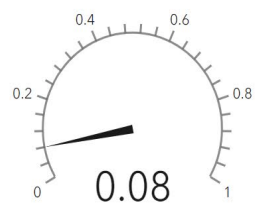
Percent Pop. with Access to 100 Download and 20 Upload



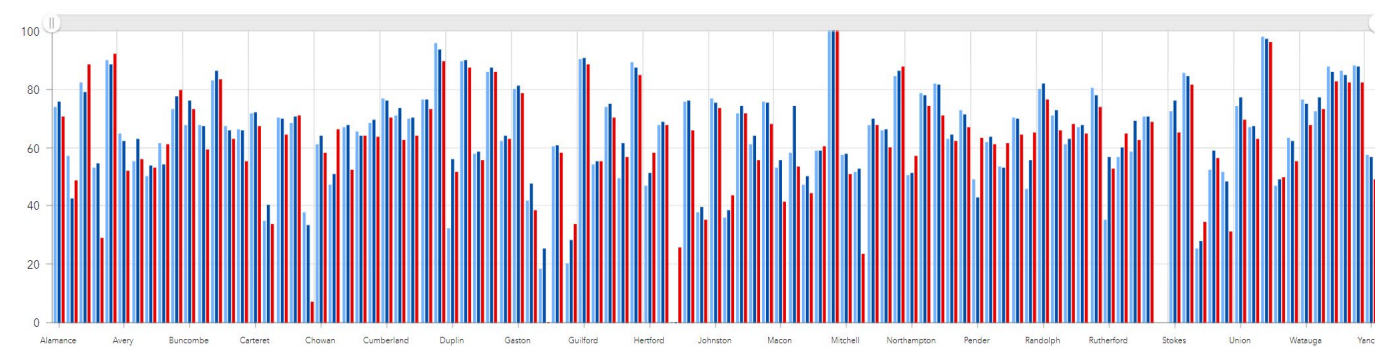
Percent Population with Available Fiber Technology



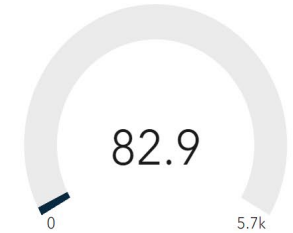
Ratio of upload to download median advertised speeds



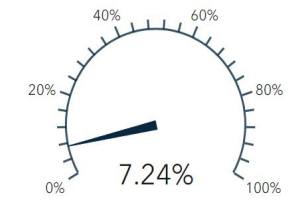
NC Broadband Availability Index - By County



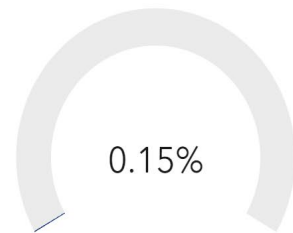
Household Density (HH/Sq. Mile)



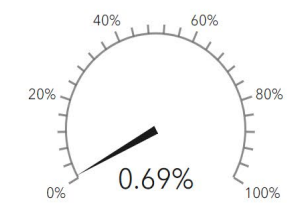
Percent housing units built in 2010 or later



Percent Population with Access to No Providers



Percent Population with Access to DSL Only



Esri, USGS | Esri, HERE, Garmin, FAO, NOAA, USGS, EPA, NPS

Powered by Esri

Broadband Survey Data (General, Phone, and Farm)

Select a category
All Counties

NC Broadband Survey Points (General, Phone, & Farm)

Service Level (calculated field):

- No Internet
- Under 25/3
- Under 25/3 (Fastest)
- Over 25/3
- Other

FCC Blocks Less Than 10mb/s Download and 1mb/s Upload (June2020)

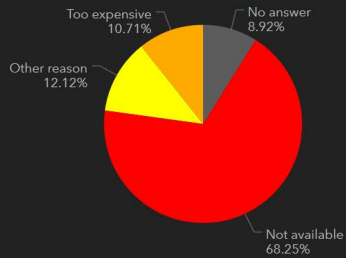


FCC Blocks Less Than 25mb/s Download and 3mb/s Upload (June2020)



FCC Blocks Less Than 100mb/s Download and 10mb/s Upload

Primary Reason for No Internet

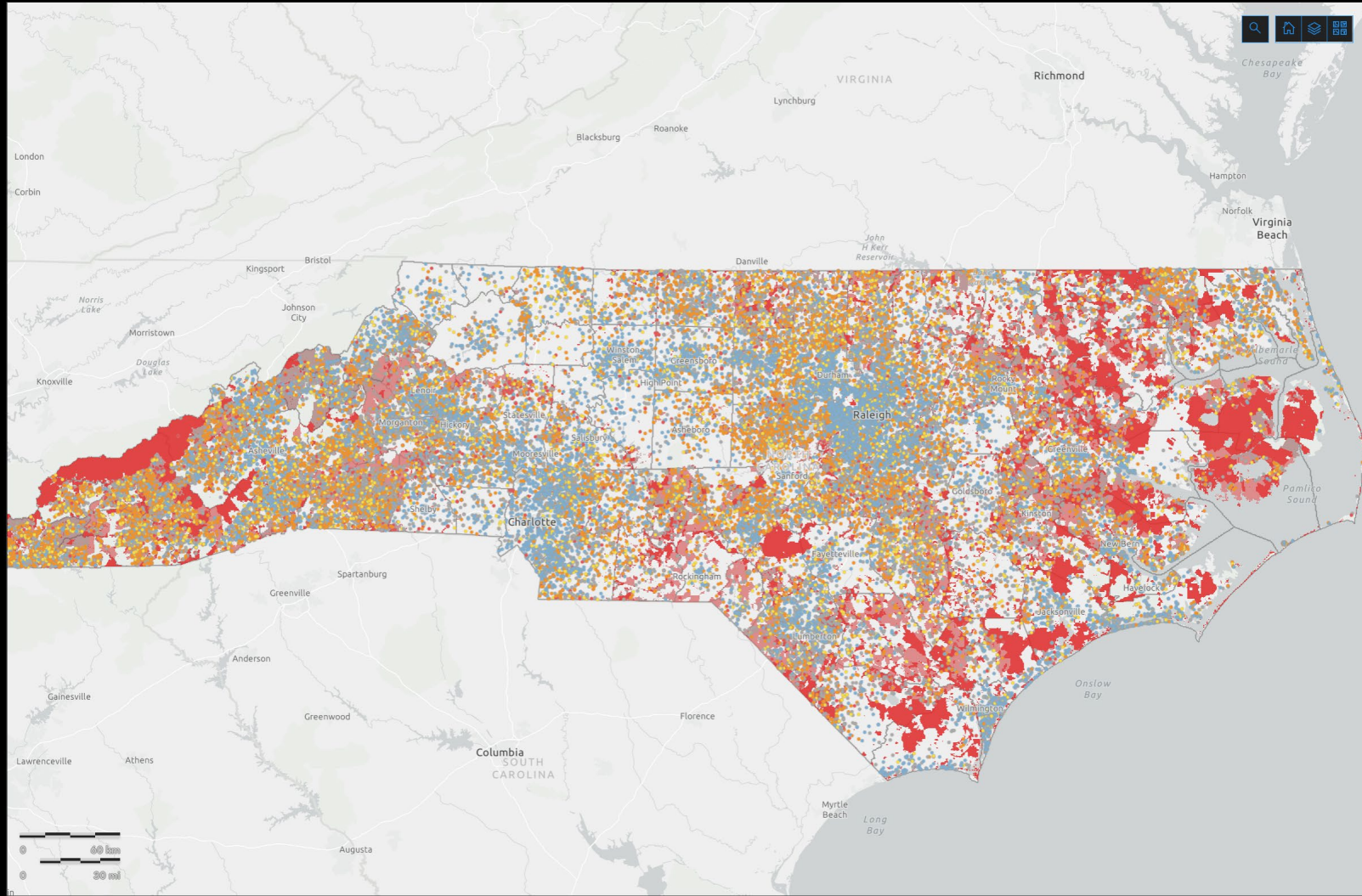


(Click slices to filter map survey points.)

Number with Speeds Under 25/3

8.7k

out of 46.1k Surveys with Speed Test Results



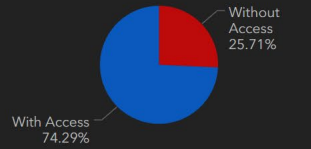
Esri, HERE, Garmin, FAO, NOAA, USGS, EPA, NPS | North Carolina Geodetic Survey, North Carolina Department of Transportation

Powered by Esri

Total Survey Responses (General, Farm, & Phone)

68k

Access to Internet (excluding cellular and satellite)



(Click slices to filter map survey points.)

Wireline % Access: Internet

Access to Cellular Service



(Click slices to filter map survey points.)

Cellular % Access: Cell

About: The NC OneMap dashboards provide location-based information on broadband availability, as collected from citizens. This Survey data consists of data collected through three specific online surveys: 1) General Survey, 2) Farm Survey, and 3) Phone-based Internet Reporting Tool. The dashboards are updated daily with new data gathered from newly surveyed North Carolinians. The dashboards were created in collaboration with Broadband Infrastructure Office, the NC Center for Geographic Information and Analysis (CGIA), and the Friday Institute for Educational Innovations at NC State University.

Disclaimer: Since those with poor connectivity are more likely to participate in these surveys, the dashboards may display survey results that do not reflect the full picture of the availability and accessibility of internet within North Carolina. These dashboards are

NC Broadband Adoption Index

Select a category

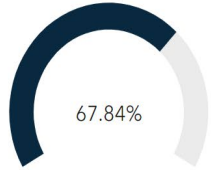
2017

2018

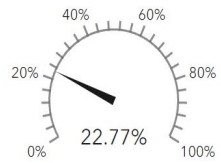
2019

County:
Statewide

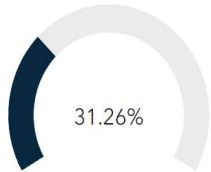
% Broadband Subscription



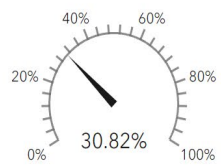
% Population Ages 18-34



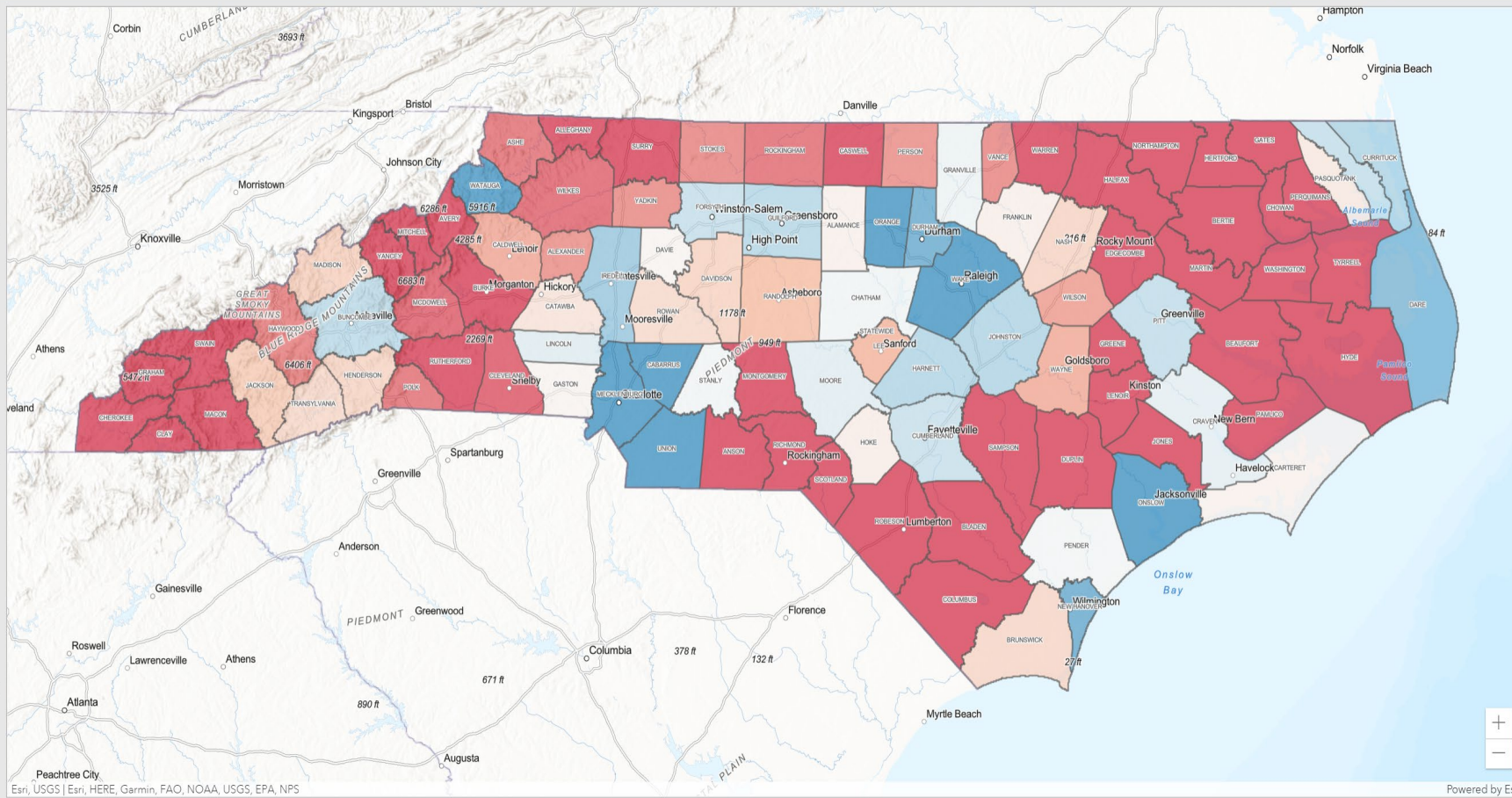
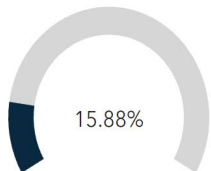
% Population with Bachelor's Degree or more



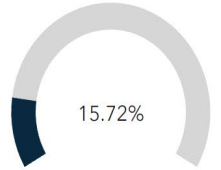
% Households with Children



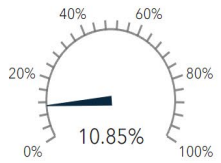
% Population Ages 65 and over



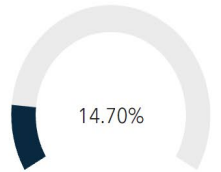
% Households with No Internet Access



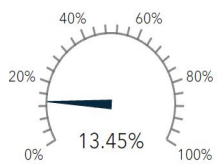
% Households No Computer Devices:



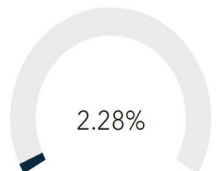
% Poverty



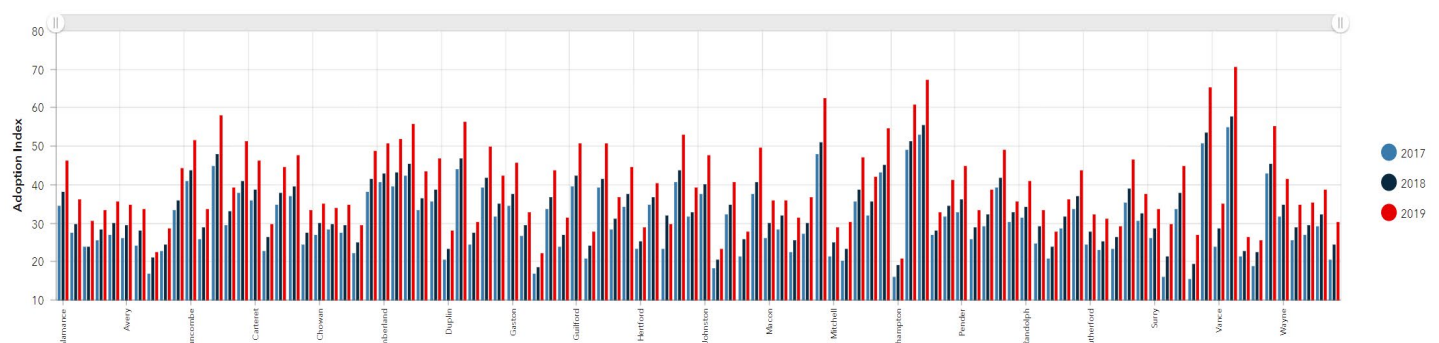
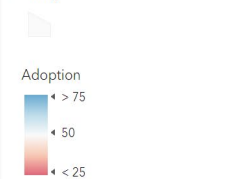
% Population with Disability



% Limited English



NC Broadband Adoption Index By County



Powered by Esri

North Carolina Broadband Survey

Unless otherwise noted, data reflect three sources: 1. General Survey, 2. Spring 2020 Farm Survey, and 3. phone survey.

Last update: **November 1, 2021**

Jump to: [MAP](#) [FIXED](#) [CELLULAR](#) **[COST](#)** [DOWNLOAD](#) [UPLOAD](#) [FCC METRICS](#)

67,966
responses

46,095
speed test

17,481
no wireline internet

3,325
no internet at all

COUNTY
(All) ▼

What is the **total cost per month** for internet only?¹

