



Welcome to TROSA!



What is TROSA?

- A licensed, evidence-based, long-term residential recovery program
- Founded in **1994** with only 13 residents
- During FY 2020-2021, we served **756 men and women**

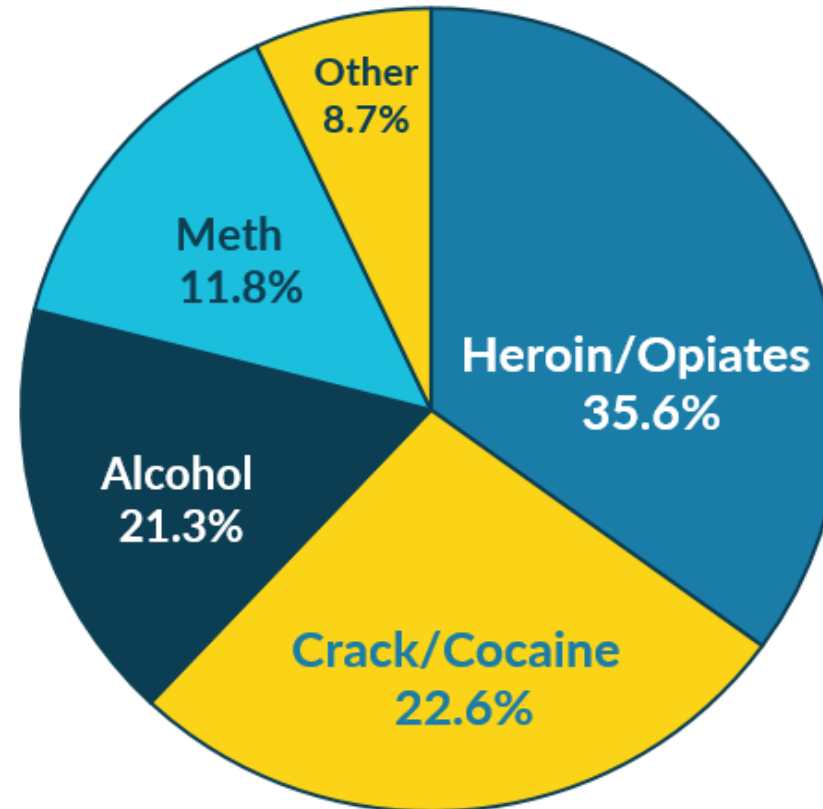
TROSA Services

Provided at no cost to the individual:

- Housing, Food, Clothing & Daily Needs
- Healthcare
- Mental Health Services
- Vocational and Life Skills Training
- Continuing Care for Graduates, including housing, transportation, and support

Primary Drugs of Addiction: FY 20-21

TROSA residents' primary drug of addiction upon admission:



67% TROSA residents reported multiple drugs of addiction

Rebuilding lives



If it weren't for TROSA,
I wouldn't be here today.
My kids have a mother who is
now fully present in their lives.
They are amazing!

You can rebuild, and you can
be who you were meant to be.

Elisha

Reconnecting families

Ways We Serve: FY 20-21



More than 400,000
meals served



More than 9,000 medical
visits coordinated



58 residents took GED classes



Over 148,000 days of stable,
safe, sober housing



113 driver's
licenses received



Nearly 400 residents received one-on-one
counseling or psychiatric appointments to
supplement daily therapeutic care

Importance of Long-Term Treatment

	U.S.	TROSA
Median Length of Stay in Long-Term Treatment ("Long-Term" is defined as > 30 days)*	39 days	407 days
Short-Term Completion Rate (30 days or less)	53%	74%

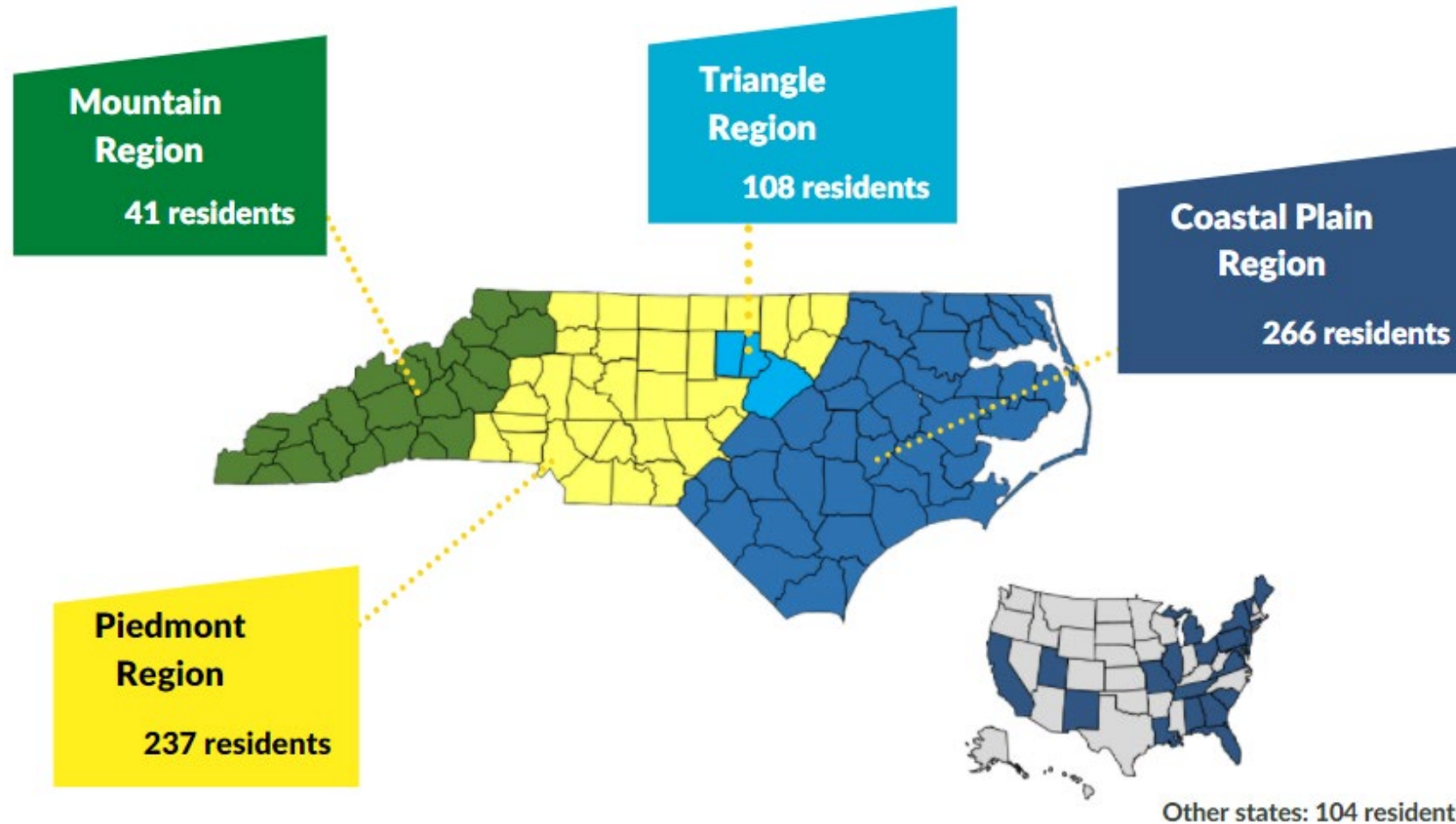
Length of Stay Source: Substance Abuse and Mental Health Services Administration, Treatment Episode Data Set (TEDS): Discharges from Substance Abuse Treatment Services. BHSIS Series S-86, HHS Publication No. (SMA) 16-4988. Rockville, MD. Released by Substance Abuse and Mental Health Services Administration, 2017.

Who We Serve

Admissions Data Collected at Intake FY 20-21

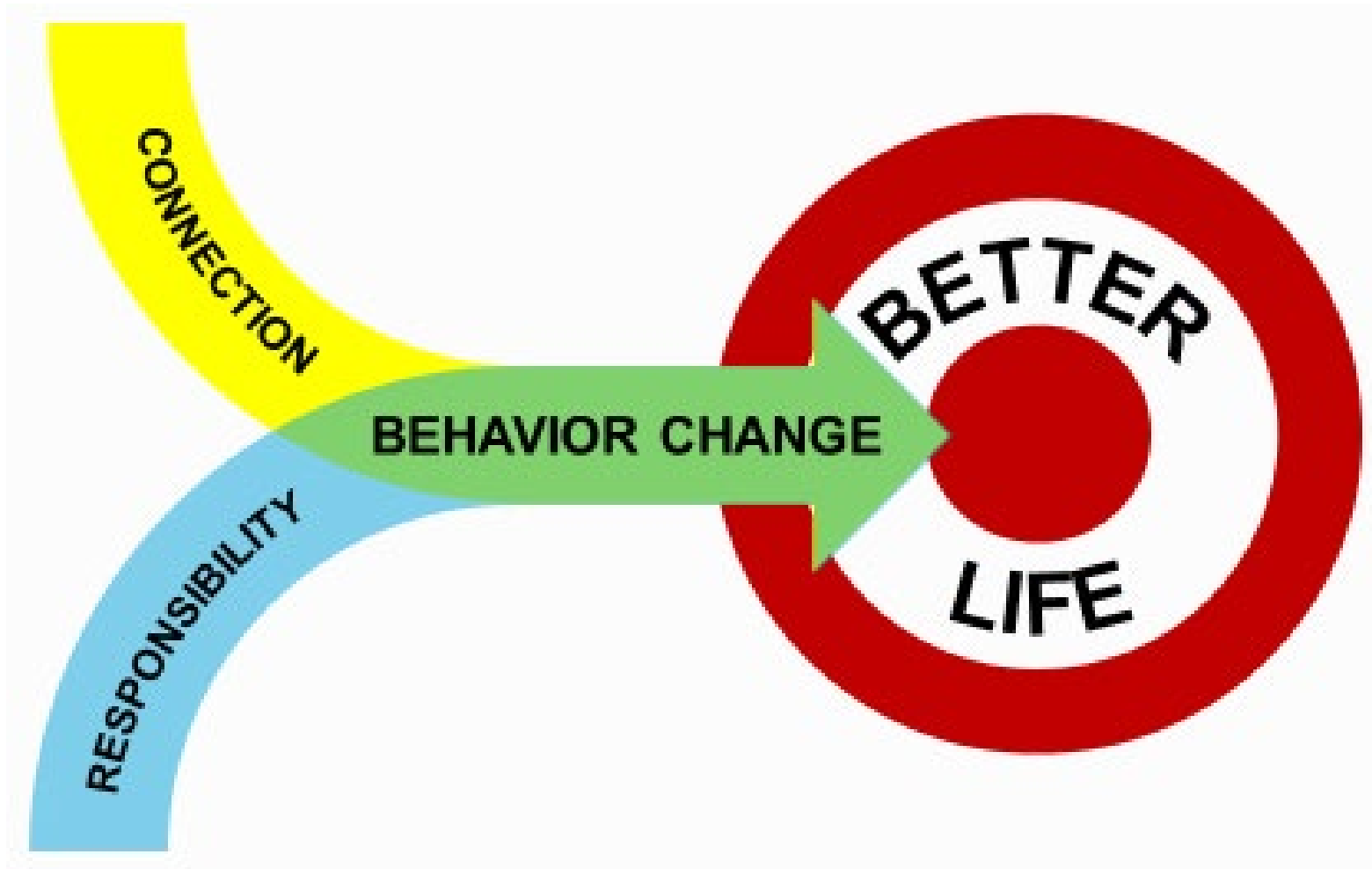
- 86% uninsured/without Medicaid
- 87% have been incarcerated
- 65% have a felony record
- 24% no high school diploma or GED
- 46% report being homeless prior to TROSA and/or anticipate homelessness if not accepted to TROSA's program

Serving all North Carolinians and the U.S.

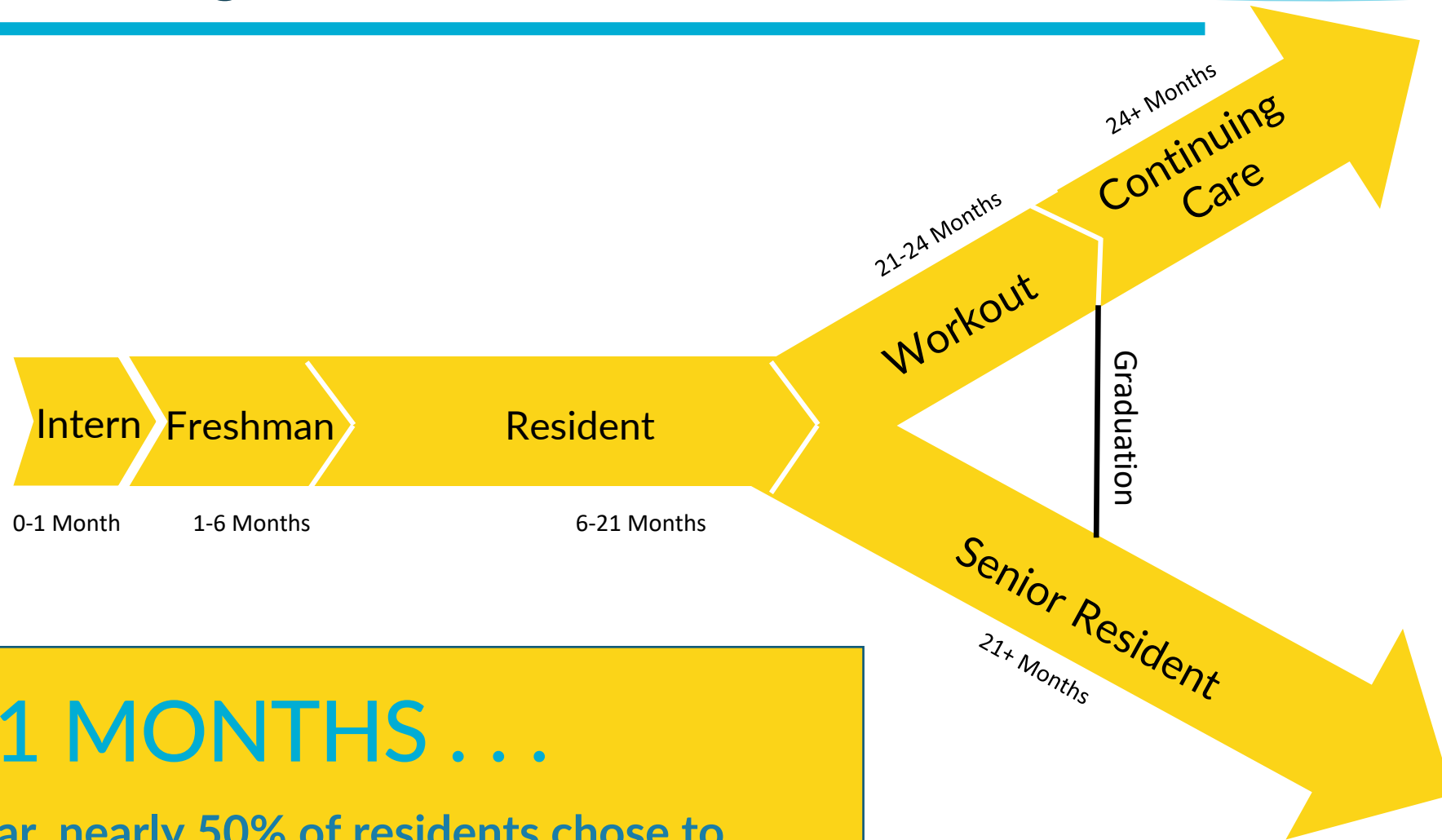


Map shows FY 20-21
resident population

TROSA Behavior Change Model



Program Stages



at 21 MONTHS . . .

Last year, nearly 50% of residents chose to continue TROSA's program as a Sr. Resident and 50% chose our Workout track

Graduate Outcomes

- **96%** obtained employment by graduation
- **96%** of most recent graduates maintained recovery one year after graduation
- **91%** of most recent graduates remained employed one year after graduation
- **98%** had no new criminal convictions within one year of graduation



Statewide Impact

According to a 2017 study by
RTI International,
**TROSA saves North Carolina at
least \$7.4 million each year**
by preventing arrests, incarceration,
and emergency hospital visits.

Source: Economic Benefits of the Triangle Residential Options for Substance Abusers (TROSA) Program to the State of North Carolina. May 2017, Joel K. Cartwright, Alan Barnosky, Pamela K. Lattimore, Alexander J. Cowell.



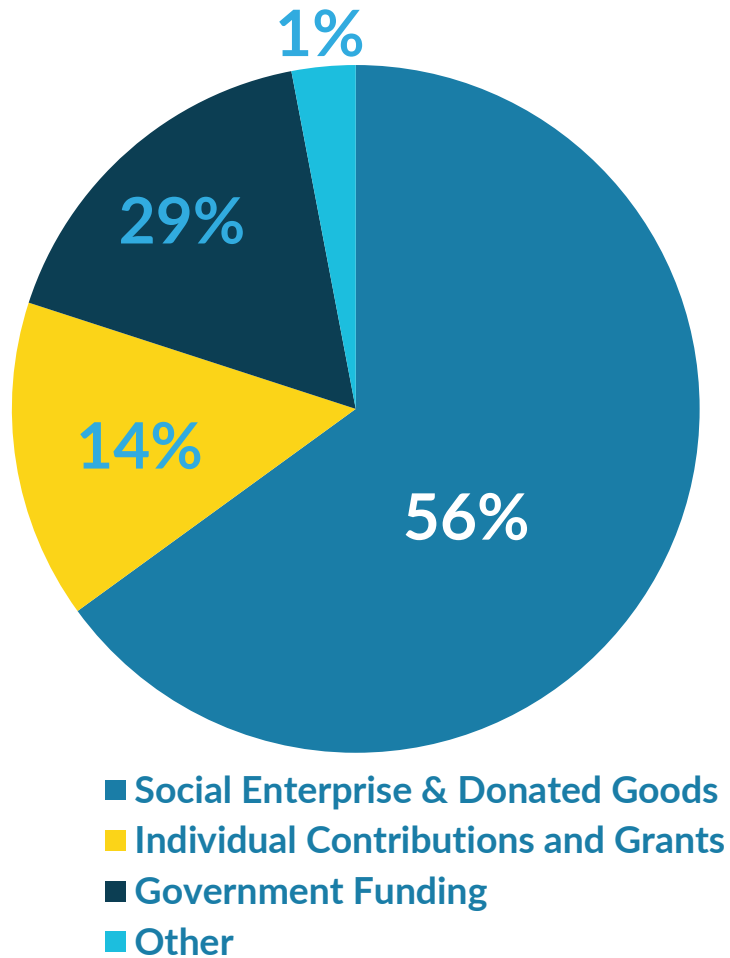
Community Assignments

- Moving
- Construction
- Lawn Care/Maintenance
- Office Administration
- Auto/Truck Repair
- Retailing & Sales
- Picture Framing
- Finance/Accounting
- Warehousing
- Food Services/Catering

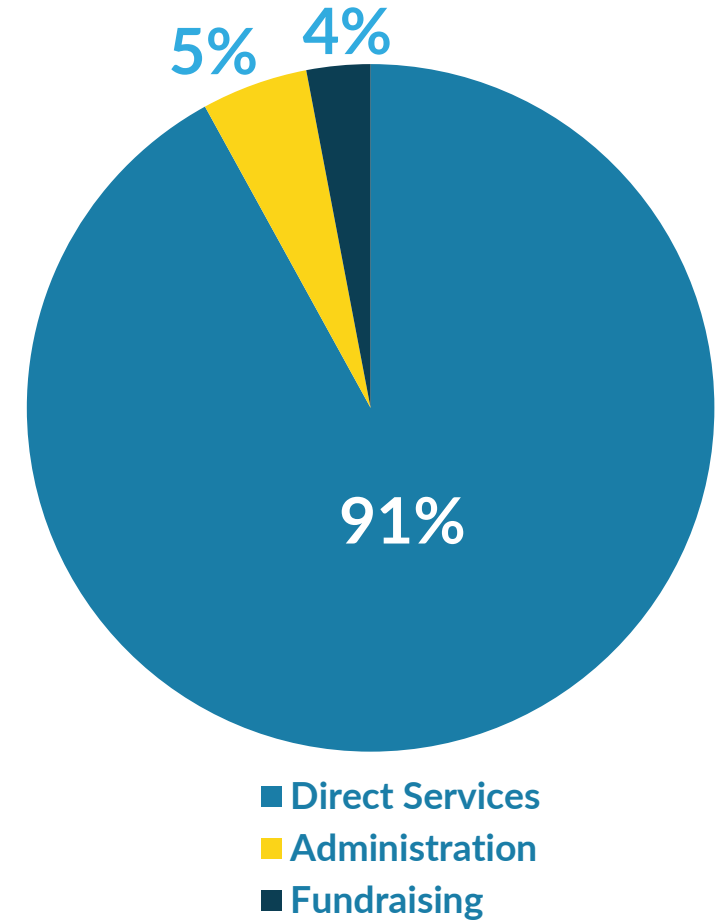


Entrepreneurial and Efficient

Sources of Funds (Revenue to Fund TROSA)



Uses of Funds (TROSA Expenses)



TROSA's Durham campus



THANK YOU!

This concludes the
presentation!
Any questions?

