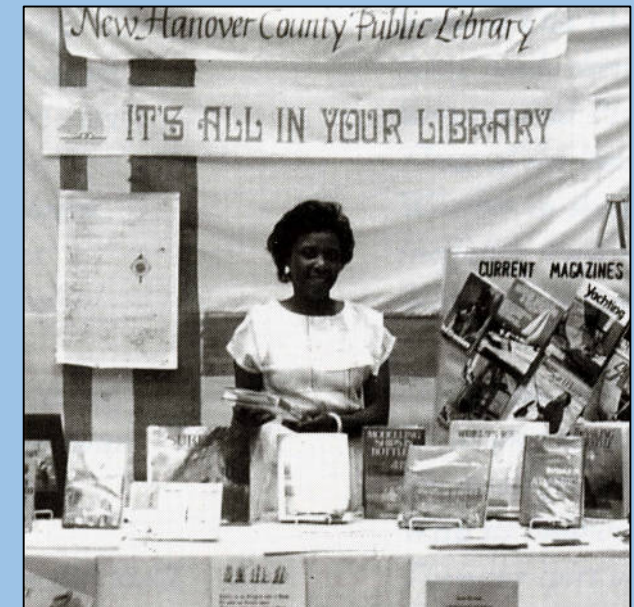
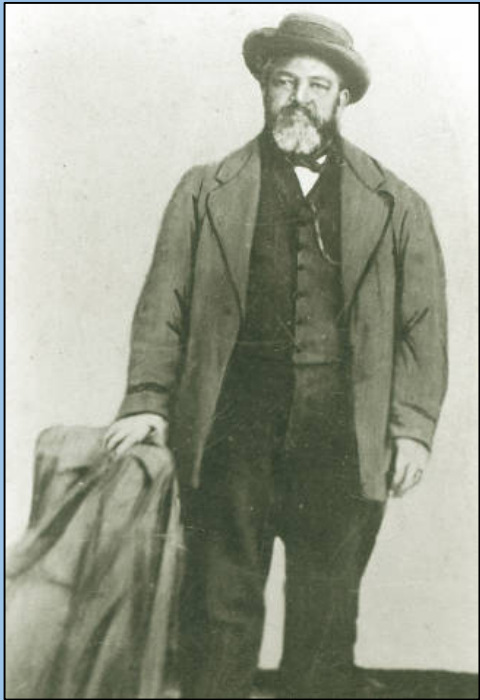


144 Years of Racial History and Trends in Economic Development in Wilmington.

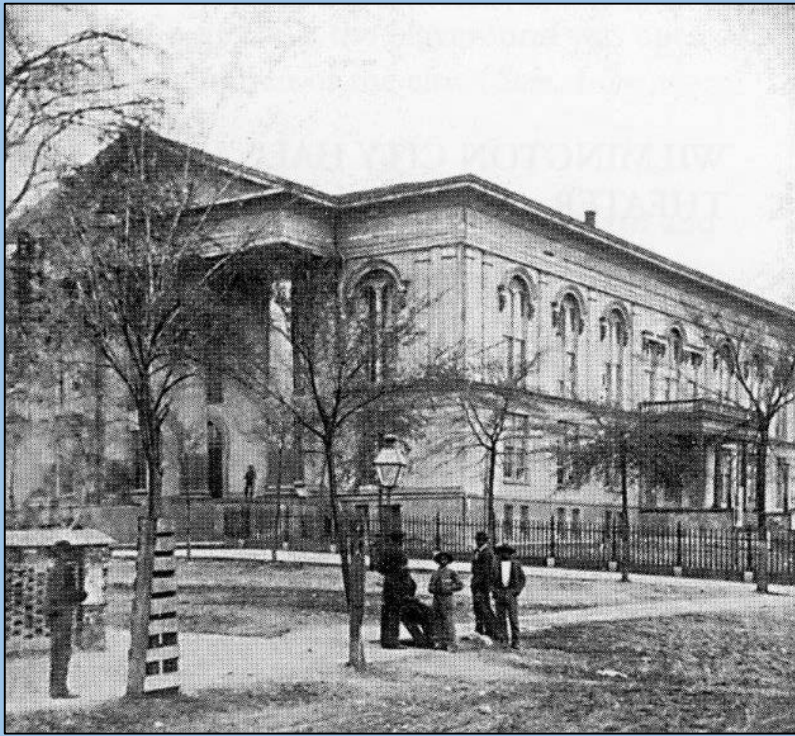


By Beverly and Glenn Tetterton
Leadership North Carolina, March 6, 2019

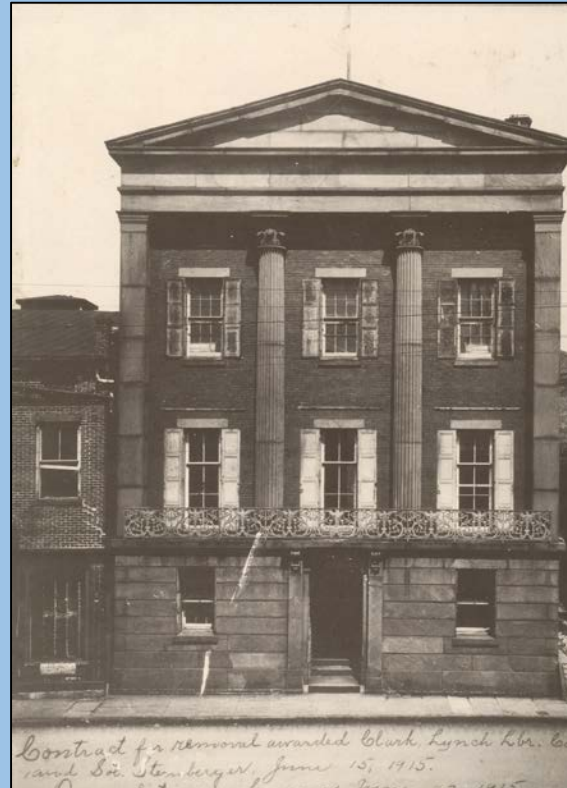
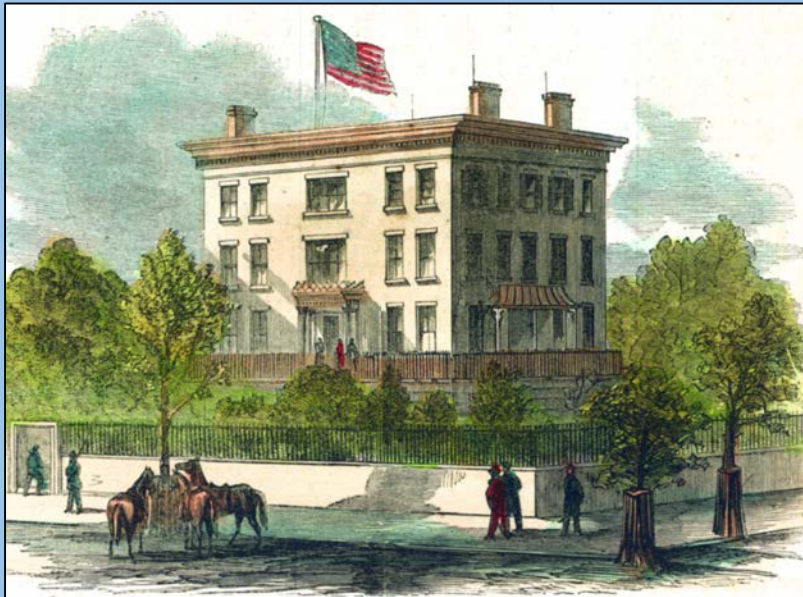


Free At Last

February 22, 1865

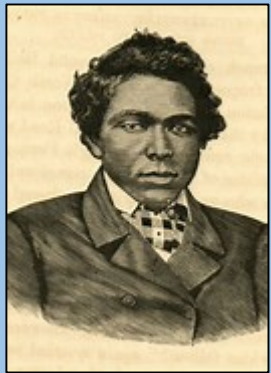


1870 Census 13,446
 African American 7,920
 White 5,526
 Wilmington was the
 largest city in NC and
 these buildings were
 constructed before the
 Civil War by enslaved and
 free African Americans.

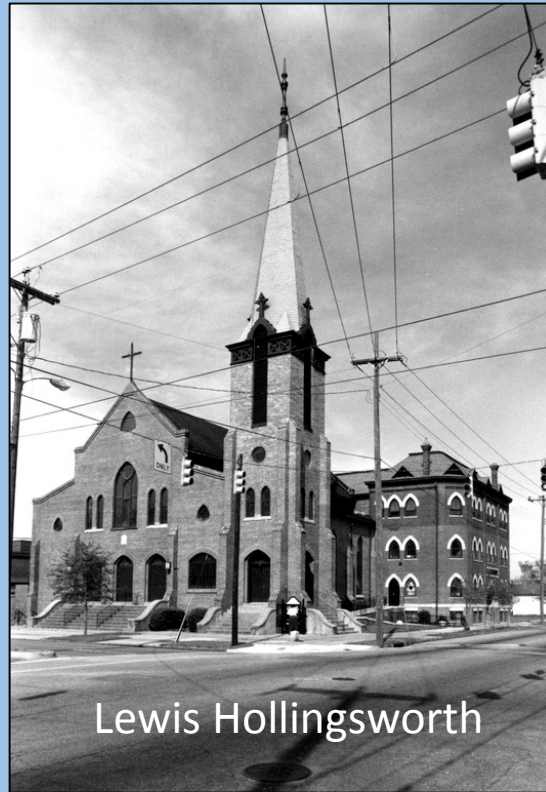




Henry Taylor



Abraham Galloway



Lewis Hollingsworth



Valentine Howe

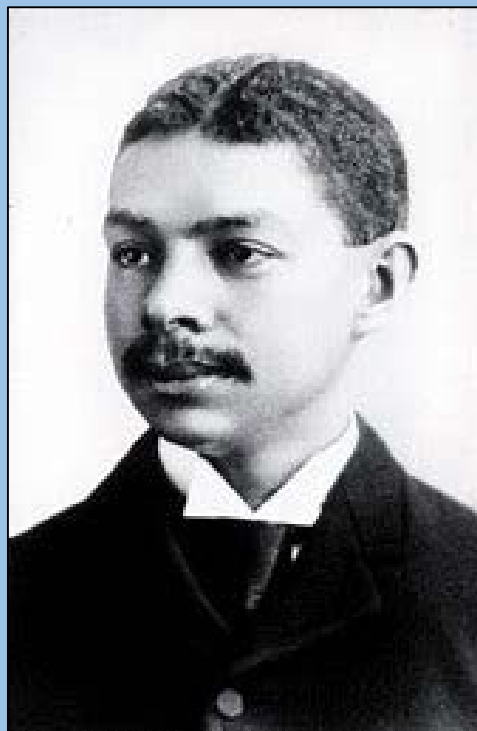


William B. Gould

North Carolina Architects and Builders
<https://ncarchitects.lib.ncsu.edu/>



Solomon Nash
Henry D. Sampson
James D. Sampson
Elvin Artis



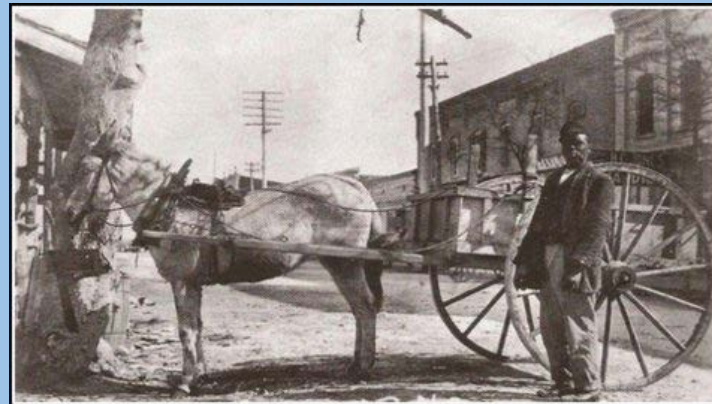
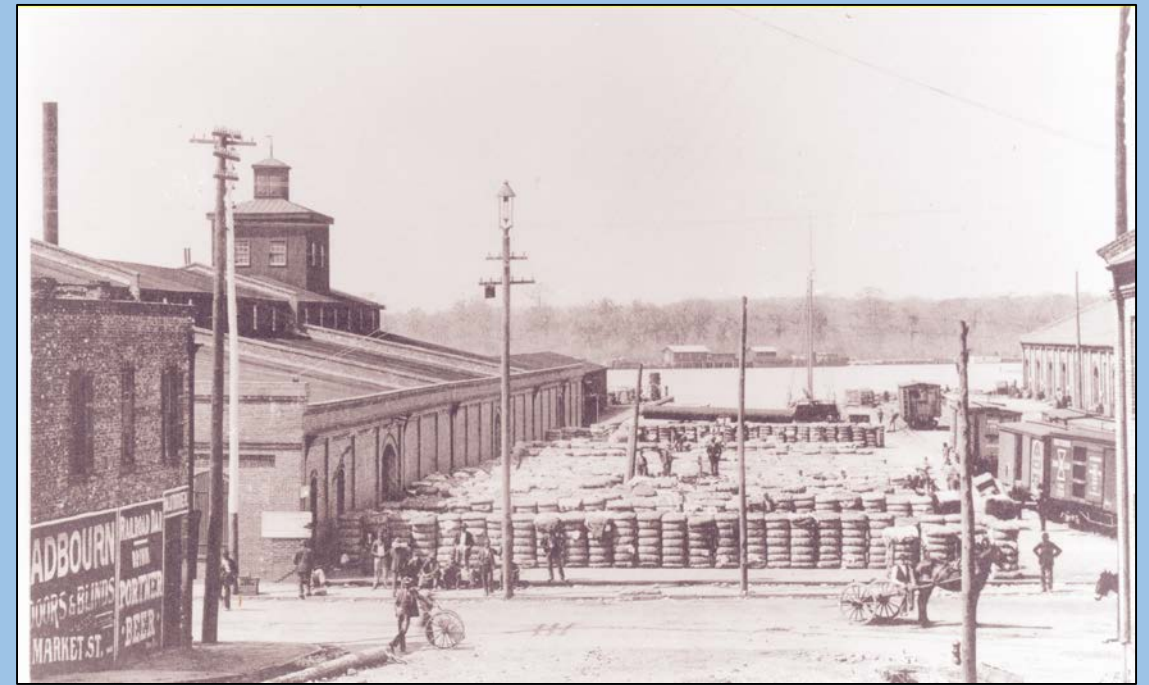
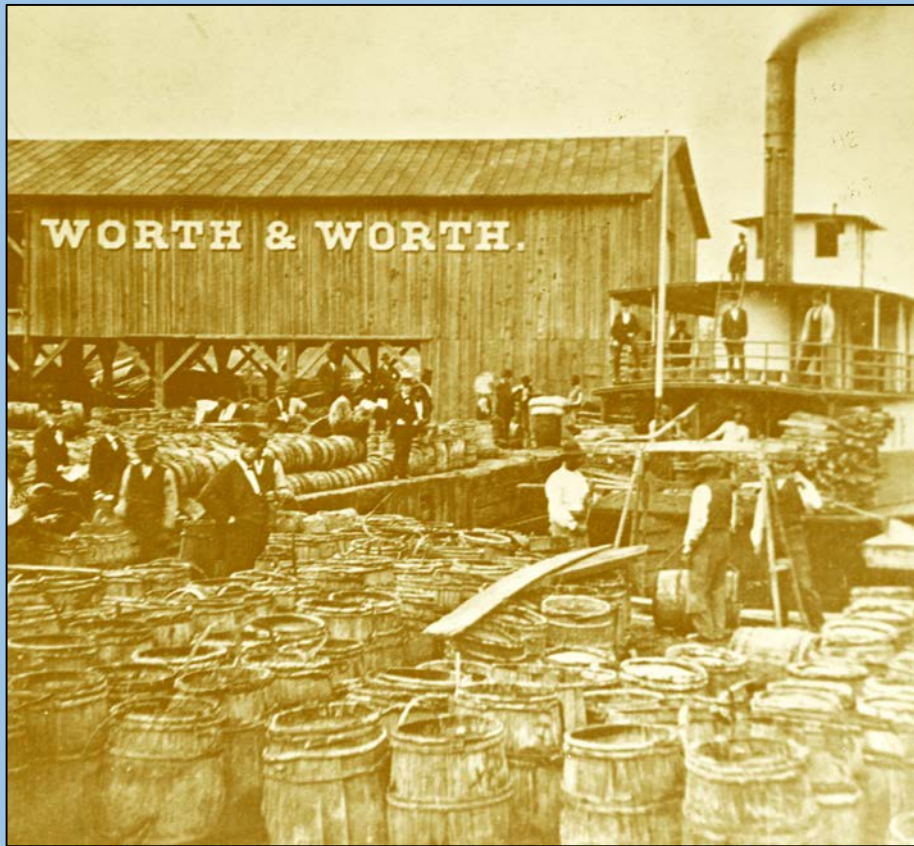
Robert Robinson Taylor





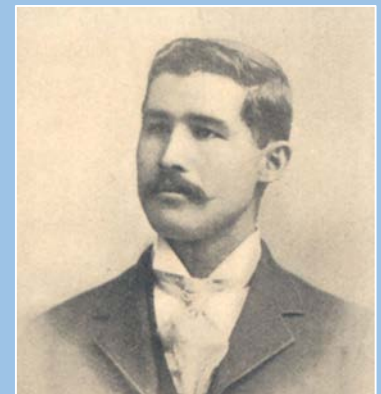
Teachers & Nurses



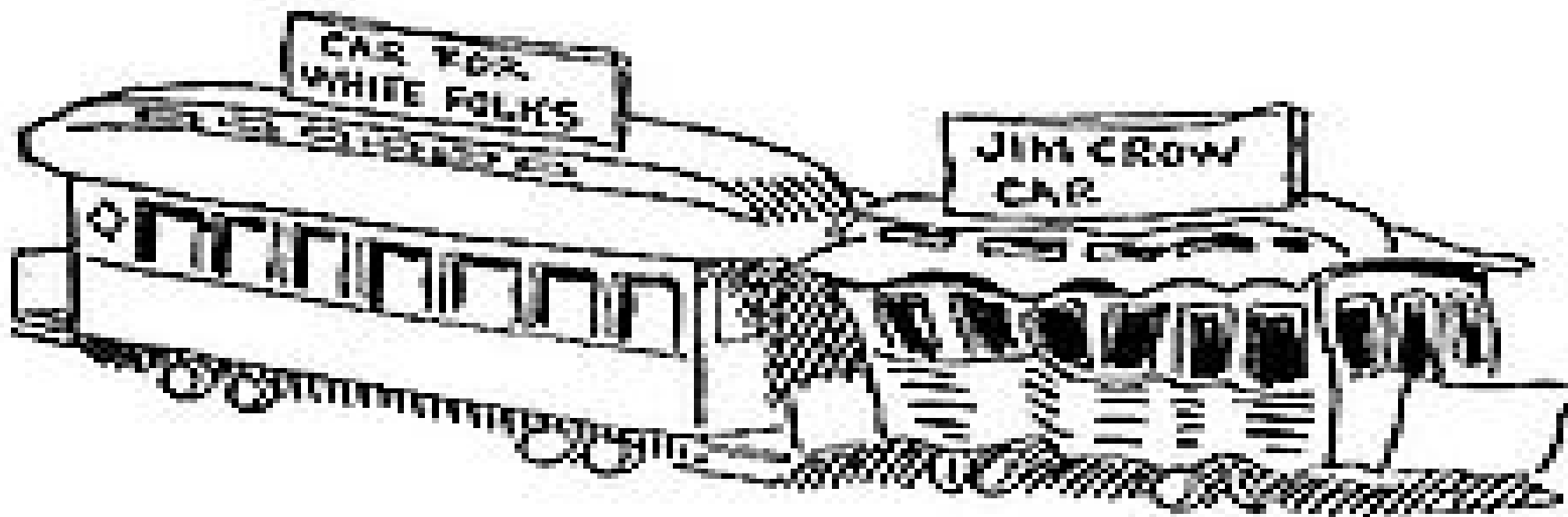




Love and Charity Hall, November 10, 1898



Alex Manly



Wilmington Population

1890 African American 11,324 White 8,731

1900 African American 10,407 White 10,556

1910 African American 12,197 White 13,627



Courtesy New Hanover Public Library

An English Steamer loading a full Cargo of Cotton at the Wharves of the Champion Compress, Wilmington, N. C.
I hope to hear from you this P.M. I'm feeling sleepy and tired this A.M. By lg Yours L



Wilmington, N.C. 4/26-07



27. Cotton Ginning Day.



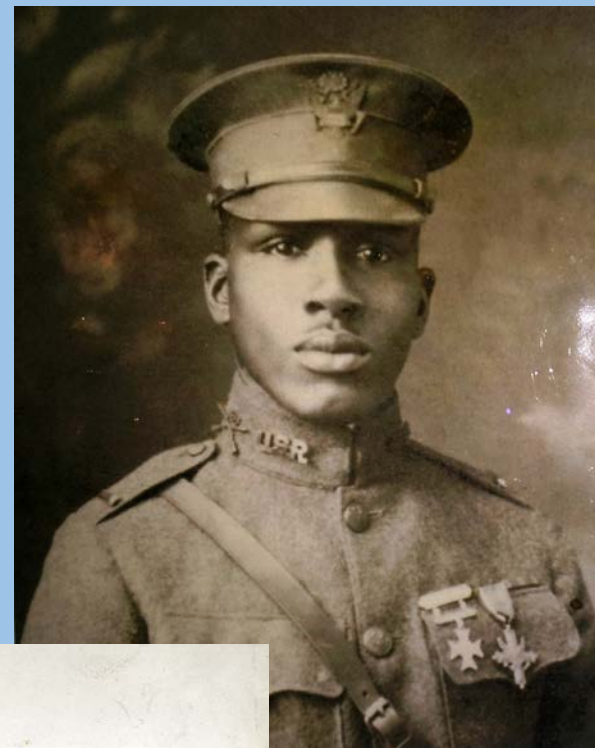
Cotton Sampling Room, Champion Compress

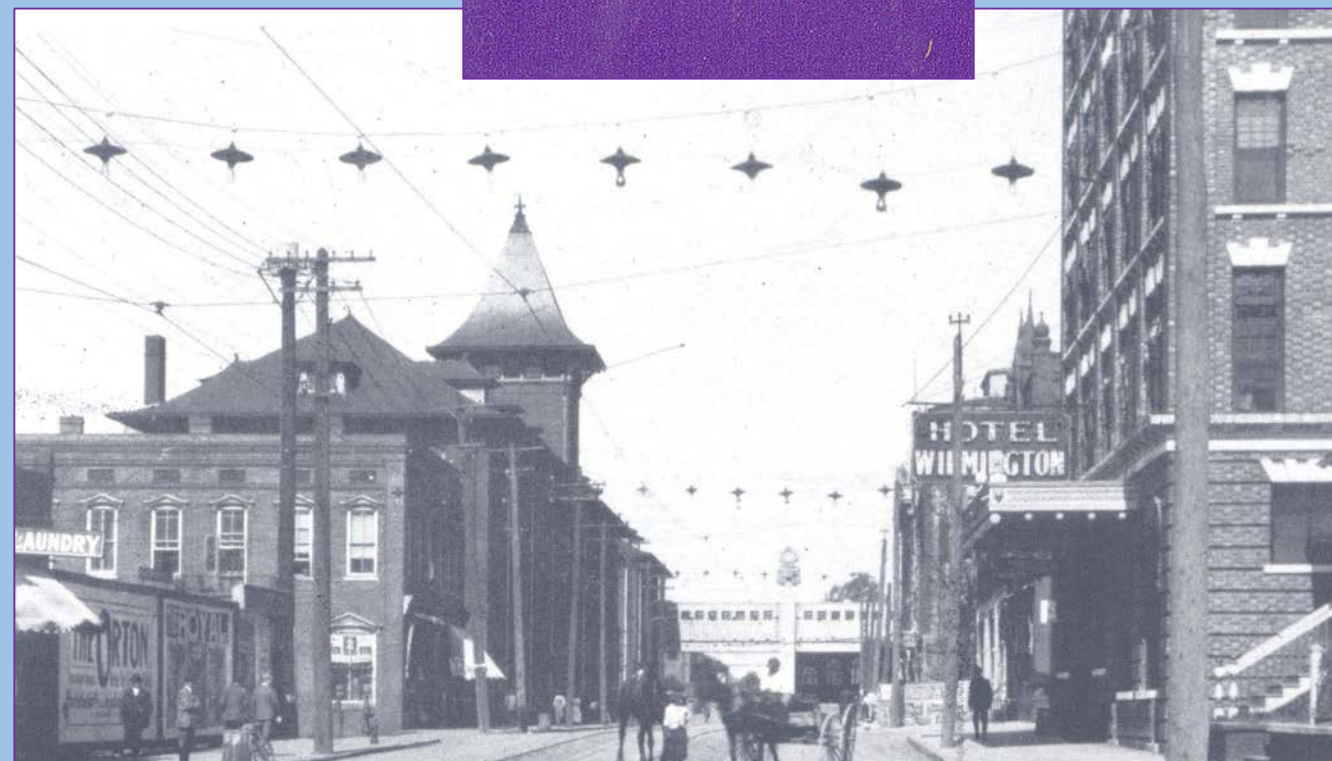
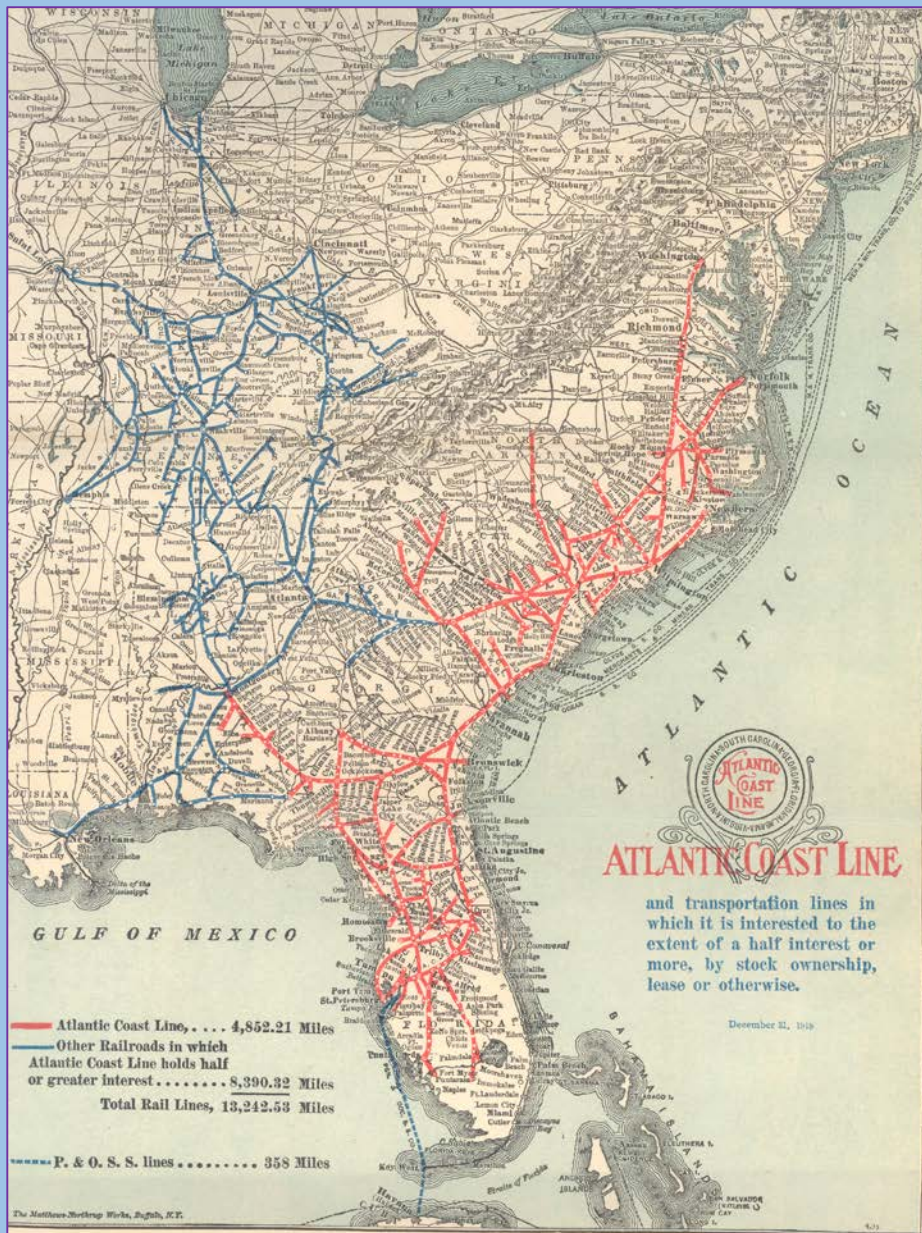
Cotton Samplers

Compressing Cotton.



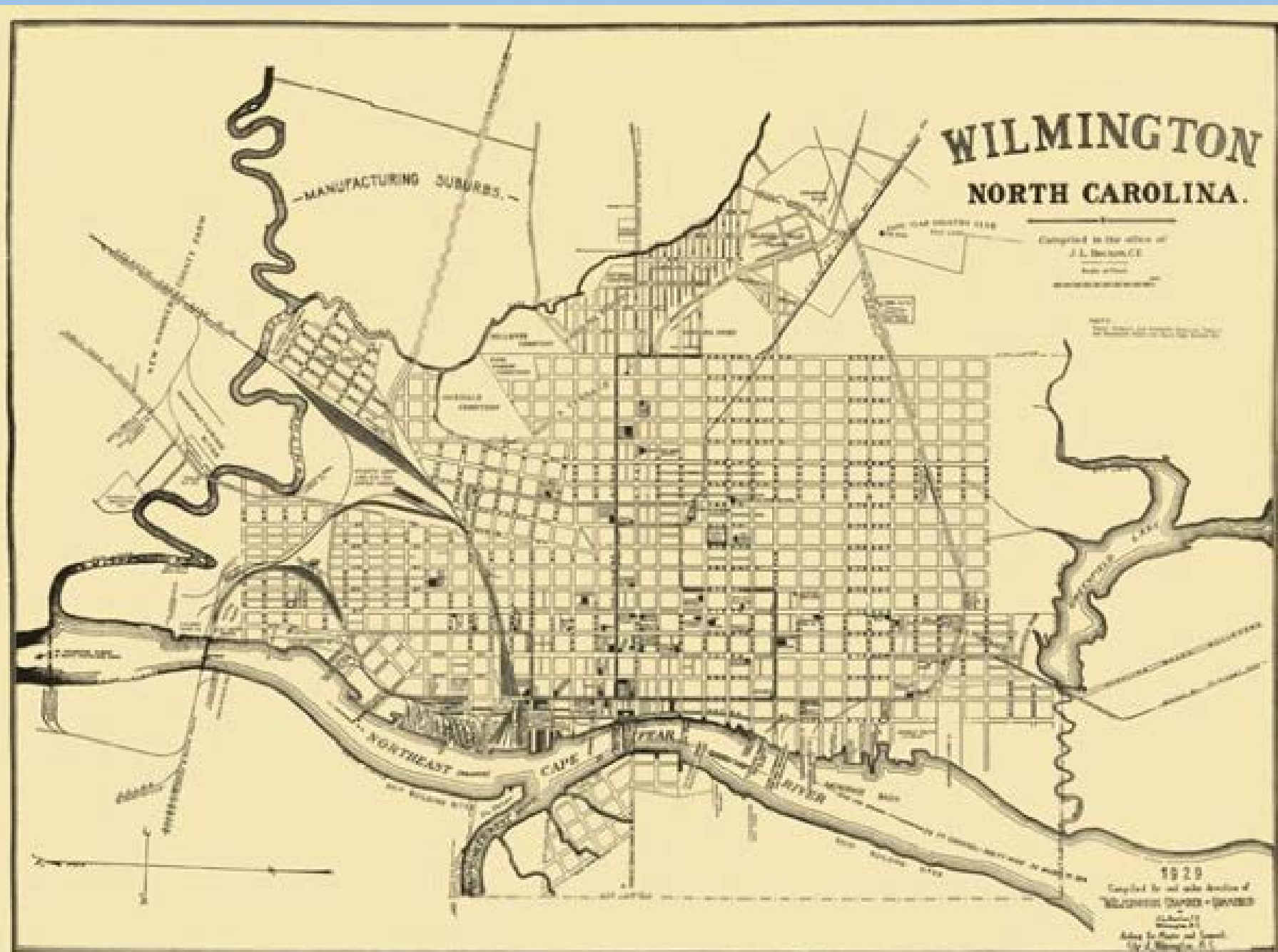
World War I Liberty Shipyard







Stevedores loading hogsheads of tobacco in the 1920s.





Great
Depression

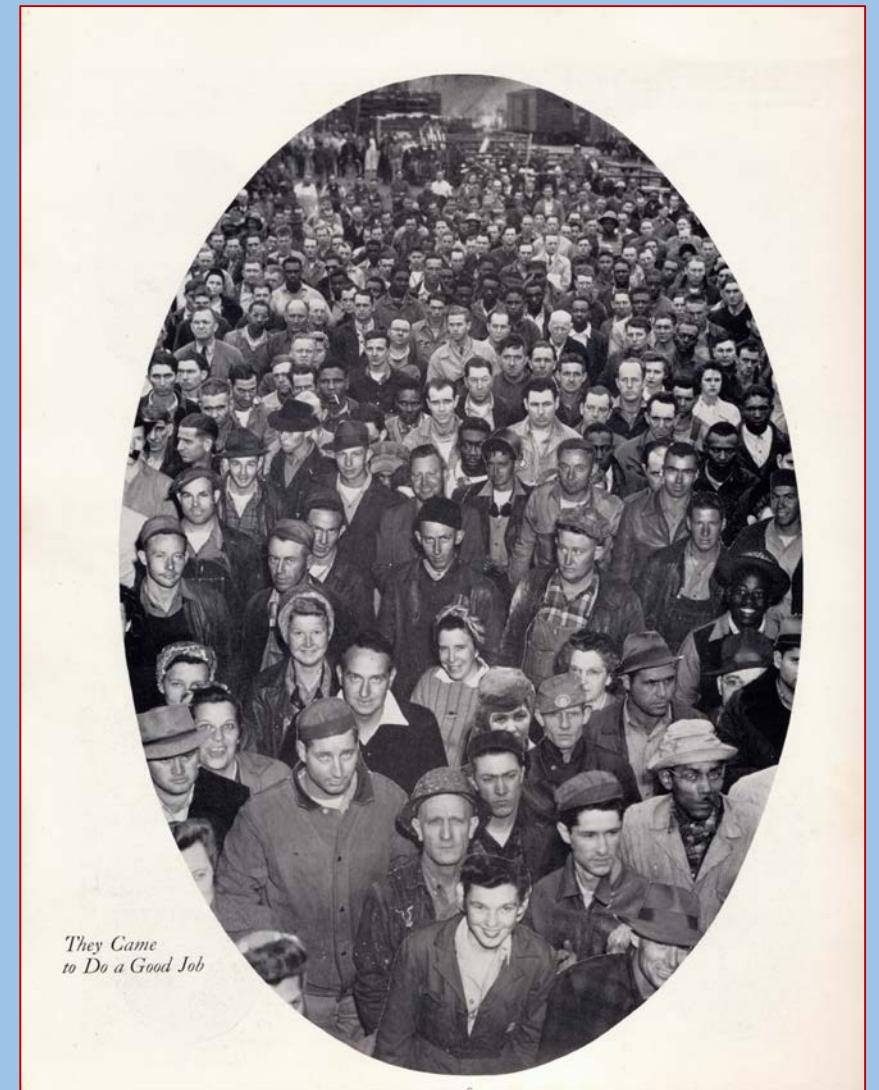
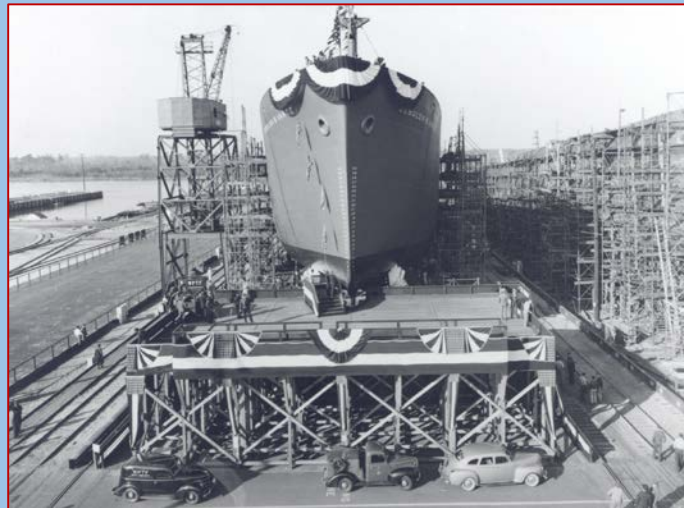




Downtown Wilmington during WWII.

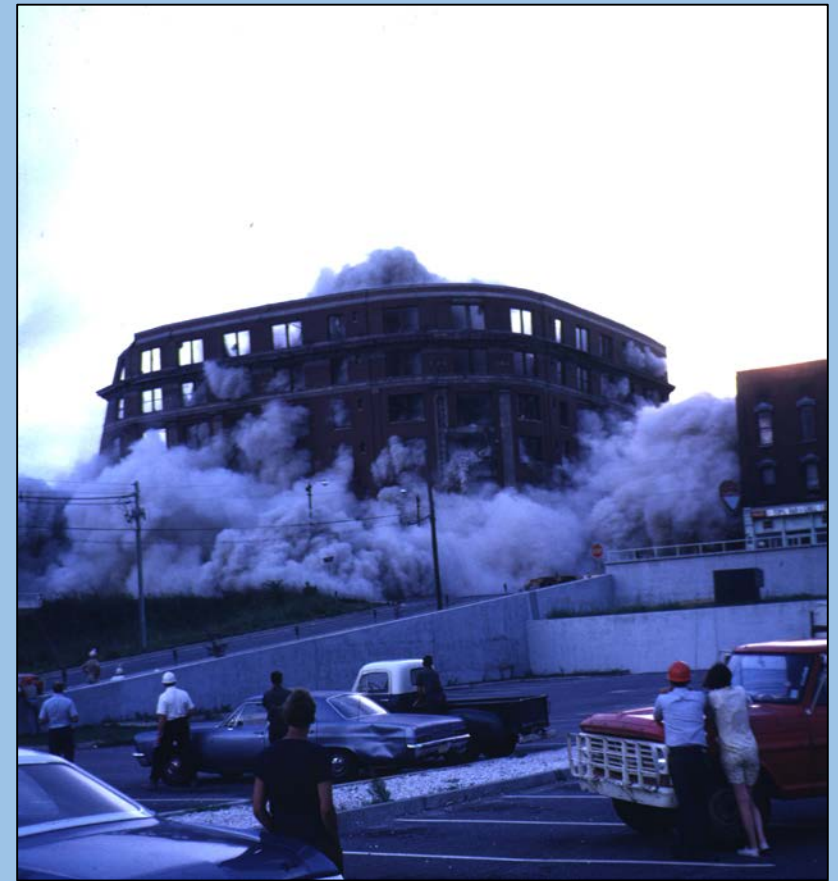
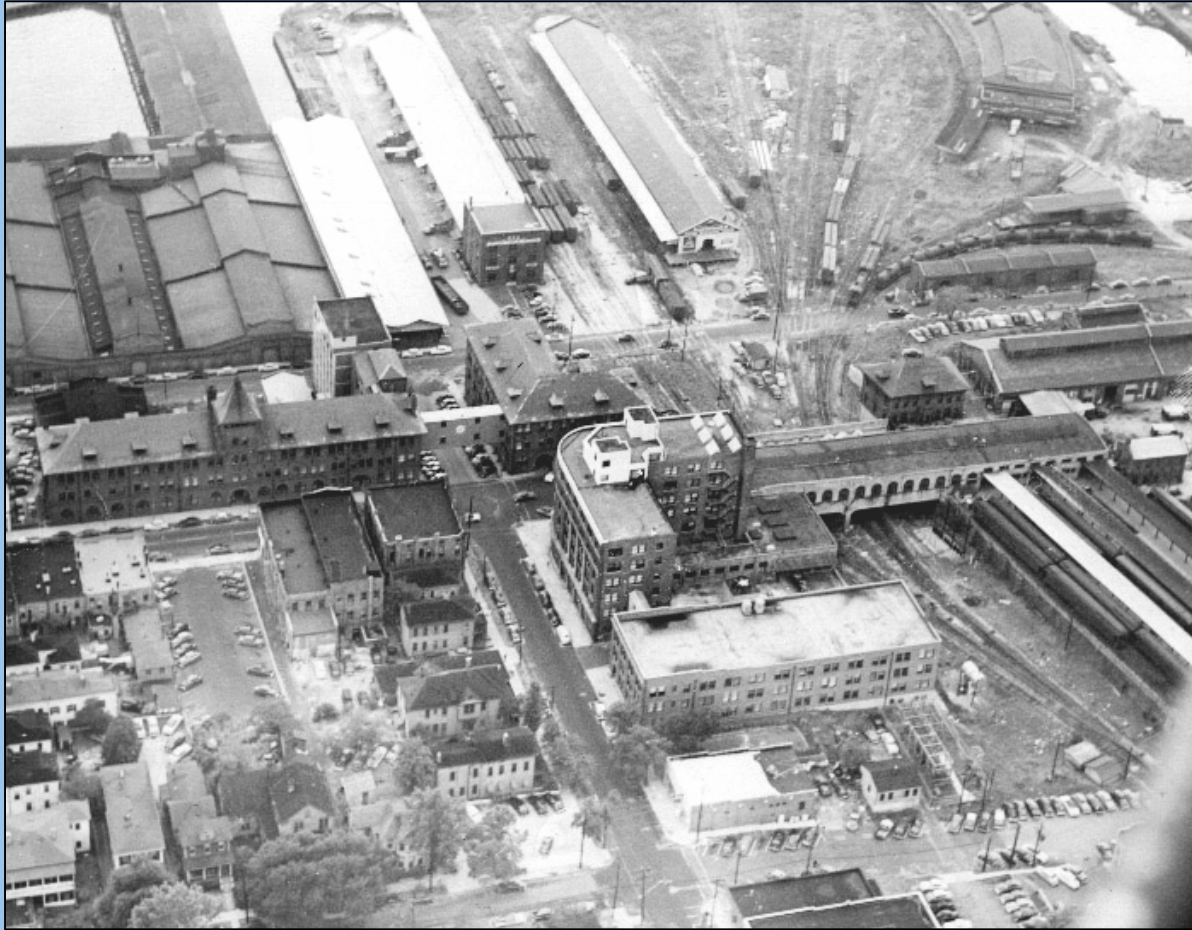
World War II

NC Shipbuilding Company
243 Ships



*They Came
to Do a Good Job*

Black Thursday, December 15, 1955





Dan Cameron

17 new firms
5 expansions at established companies
2,160 new workers added to workforce







Williston Senior High School

New Hanover High School



1966

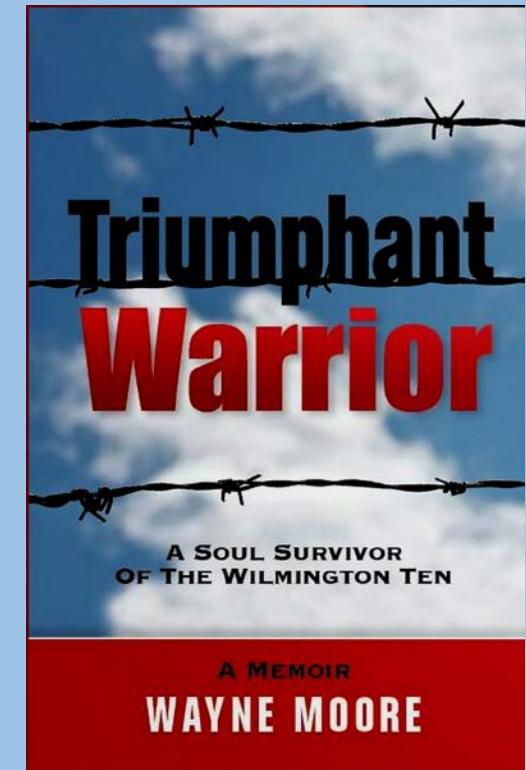
27 public schools

18,000 students

Today 22,236



Wilmington Ten, 1971



Integration included the closing of Williston High School.



Downtown Wilmington in the 1970s





Sundown Towns
Integration
Separation of Neighborhoods

Dorothy Woods



2019



1981

Redlining

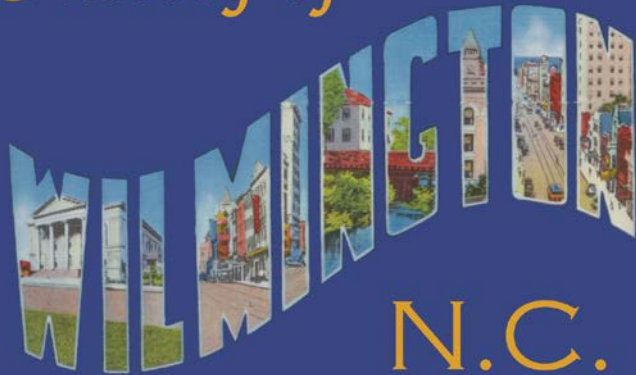
Zip Code

Voting

Gentrification



A Brief History of



BY
BEVERLY TETTERTON
AND DAN CAMACHO



**Wilmington.
tours**

Self-guided tours of historic
Wilmington on your phone or
tablet.

Begin when you want.
Walk at your own pace.
Take a break with a cool drink.
Continue tomorrow if you want.

[over]

Our app uses your device's
GPS to lead you to our many
historic sites. At each stop
scroll through fascinating
pics and read or listen to a
3-5 minute history.

Available on iOS & Android
(search "wilmington.tours")
or visit

www.wilmington.tours



www.Wilmington.tours