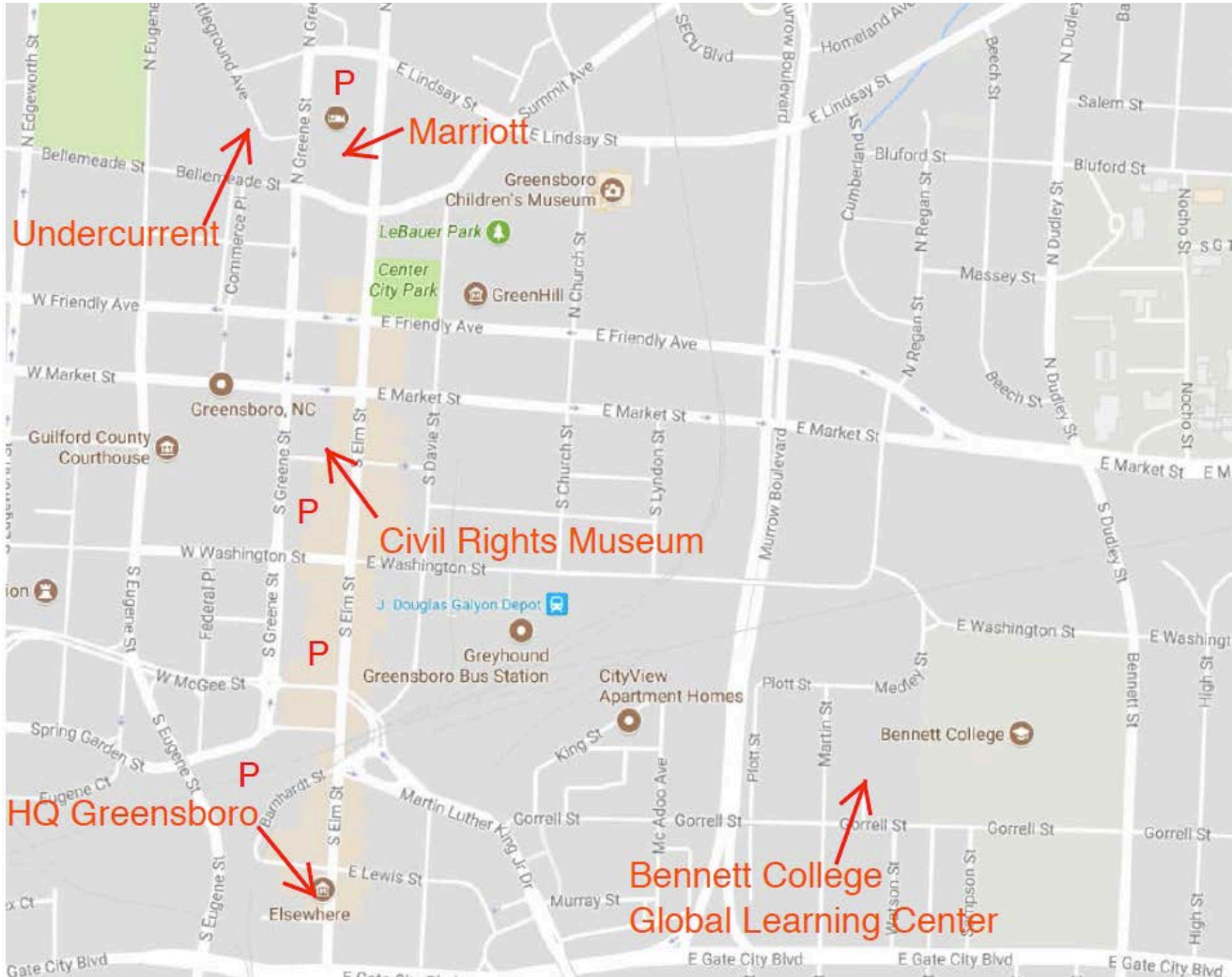




LNC Class XXVI Education Session December 4-6, 2018, Greensboro Maps and Directions

Downtown Greensboro Locations



Greensboro Marriott Downtown – Base Hotel

304 North Greene Street
Greensboro, NC 27401
(336) 379-8000

<http://bit.ly/GreensboroMarriott>

Parking

Parking is available in the garage opposite the Marriott entrance. Guests may leave cars in the breezeway during check-in and return to park them once they have received their parking vouchers from the front desk. The parking deck is accessible both from the one-way breezeway and from the opposite side on East Lindsay Street.

Questions? Call Kelly Turner at (919) 523-4336, Maggie Stroud at (919) 830-1110,
Brian Etheridge at (919) 609-1113, or Emily Smith at (919) 538-4693.

International Civil Rights Center and Museum (ICRCM) – Tuesday 1-4 pm Optional Activity

134 South Elm Street
Greensboro, NC 27401
(336) 274-9199

<http://bit.ly/CivilRightsMuseum>

Advance RSVP required for this activity.

Parking

On Elm Street heading south, pass the International Civil Rights Museum and turn right onto West Washington Street and right into the Greene Street parking deck. On Elm Street heading north, pass Natty Greene's pub on the right and take the next left onto West Washington Street. The parking deck can be accessed from South Greene Street and Washington Street. Pay parking on the street and in outdoor lots is also available.

HQ Greensboro – Tuesday 5:30-7 pm Optional Reception

111 West Lewis Street
Greensboro, NC 27406
(336) 365-1043

<http://bit.ly/HQGreensboro>

Walking

HQ Greensboro is 7-10 minute walk from the Civil Rights Museum and a 15-20 minute walk from the Marriott.

Parking

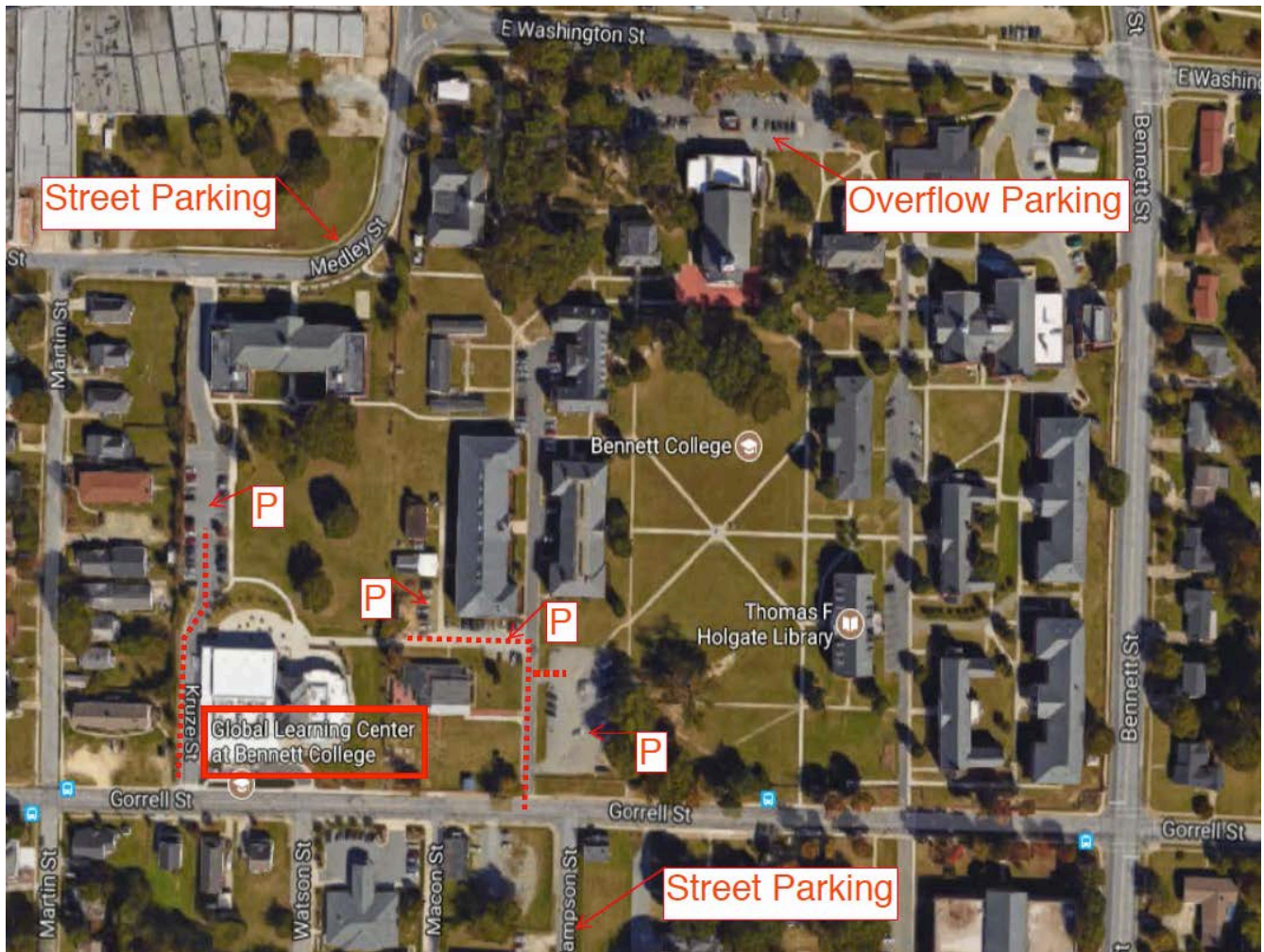
Parking is available on the street (metered until 6:00 pm) or in parking decks nearby.

Bennett College Global Learning Center – Wednesday Session Location

521 Gorrell Street
Greensboro, NC 27406

<http://bit.ly/BennettCollegeGLC>

As always, we encourage carpooling. For parking, please refer to the map below for several options.



Parking

As noted on the map, there are numerous parking lot options near the Global Learning Center, as well as street parking available on Sampson Street and Medley Street.

Undercurrent – Wednesday Night 7 pm Class Dinner

327 Battleground Avenue

Greensboro, NC 27401

<http://bit.ly/UndercurrentDinner>

From the Greensboro Marriott Downtown (walking)

1. Exit the hotel onto Greene Street.
2. Turn right and walk north.
3. Walk left down Lindsay Street and turn left onto Battleground Avenue.
4. Undercurrent is in the one-story brick building on the right.

Parking

There is limited street parking around Undercurrent. A parking lot on the right side of the building has a few spots reserved for Undercurrent. It is faster and more convenient to walk.

Questions? Call Kelly Turner at (919) 523-4336, Maggie Stroud at (919) 830-1110, Brian Etheridge at (919) 609-1113, or Emily Smith at (919) 538-4693.

Revolution Mill – Thursday Meeting Location

1000 Revolution Mill Drive

Greensboro, NC 27405

<http://bit.ly/RevolutionMill>



Parking

Once you turn onto Revolution Mill Drive, continue straight and follow the LNC signs towards 1000 Revolution Mill Drive. Parking is available opposite the 1000 building entrance sign. Enter the building at the 1000 address and follow the LNC signs to the meeting space.

Questions? Call Kelly Turner at (919) 523-4336, Maggie Stroud at (919) 830-1110, Brian Etheridge at (919) 609-1113, or Emily Smith at (919) 538-4693.