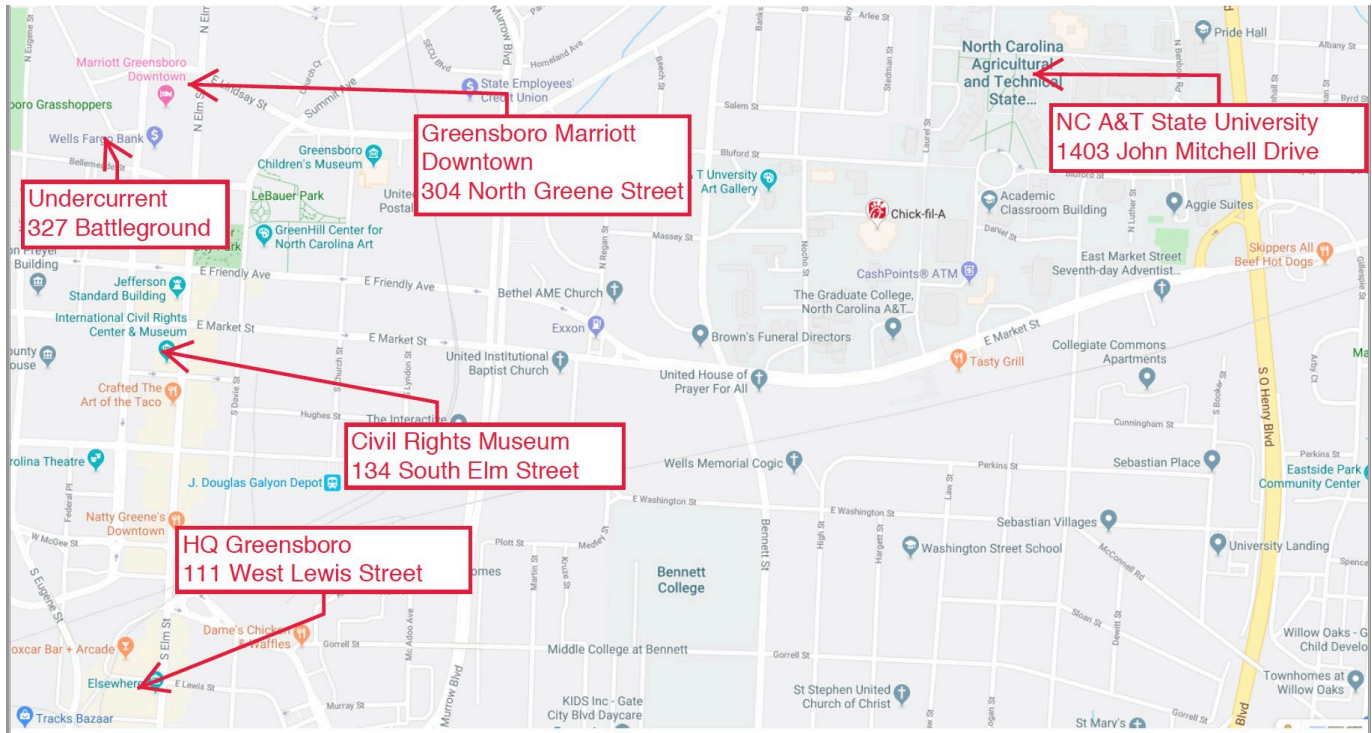




LNC Class XXVII Education Session December 3-5, 2019, Greensboro Maps and Directions

Downtown Greensboro Locations



Greensboro Marriott Downtown – Base Hotel

304 North Greene Street
Greensboro, NC 27401
(336) 379-8000
<http://bit.ly/GreensboroMarriott>

Parking

Parking is available in the garage opposite the Marriott entrance. Guests may leave cars in the breezeway during check-in and return to park them once they have received their parking vouchers from the front desk. The parking deck is accessible both from the one-way breezeway and from the opposite side on East Lindsay Street.

International Civil Rights Center and Museum (ICRCM) – Tuesday 1-4 pm Optional Activity

134 South Elm Street
Greensboro, NC 27401
(336) 274-9199

<http://bit.ly/CivilRightsMuseum>

Advance RSVP required for this activity.

Parking

On Elm Street heading south, pass the International Civil Rights Museum and turn right onto West Washington Street and right into the Greene Street parking deck. On Elm Street heading north, pass Natty Greene's pub on the right and take the next left onto West Washington Street. The parking deck can be accessed from South Greene Street and Washington Street. Pay parking on the street and in outdoor lots is also available.

HQ Greensboro – Tuesday 5:30-7 pm Optional Reception

111 West Lewis Street
Greensboro, NC 27406
(336) 365-1043

<http://bit.ly/HQGreensboro>

Walking

HQ Greensboro is 7-10 minute walk from the Civil Rights Museum and a 15-20 minute walk from the Marriott.

Parking

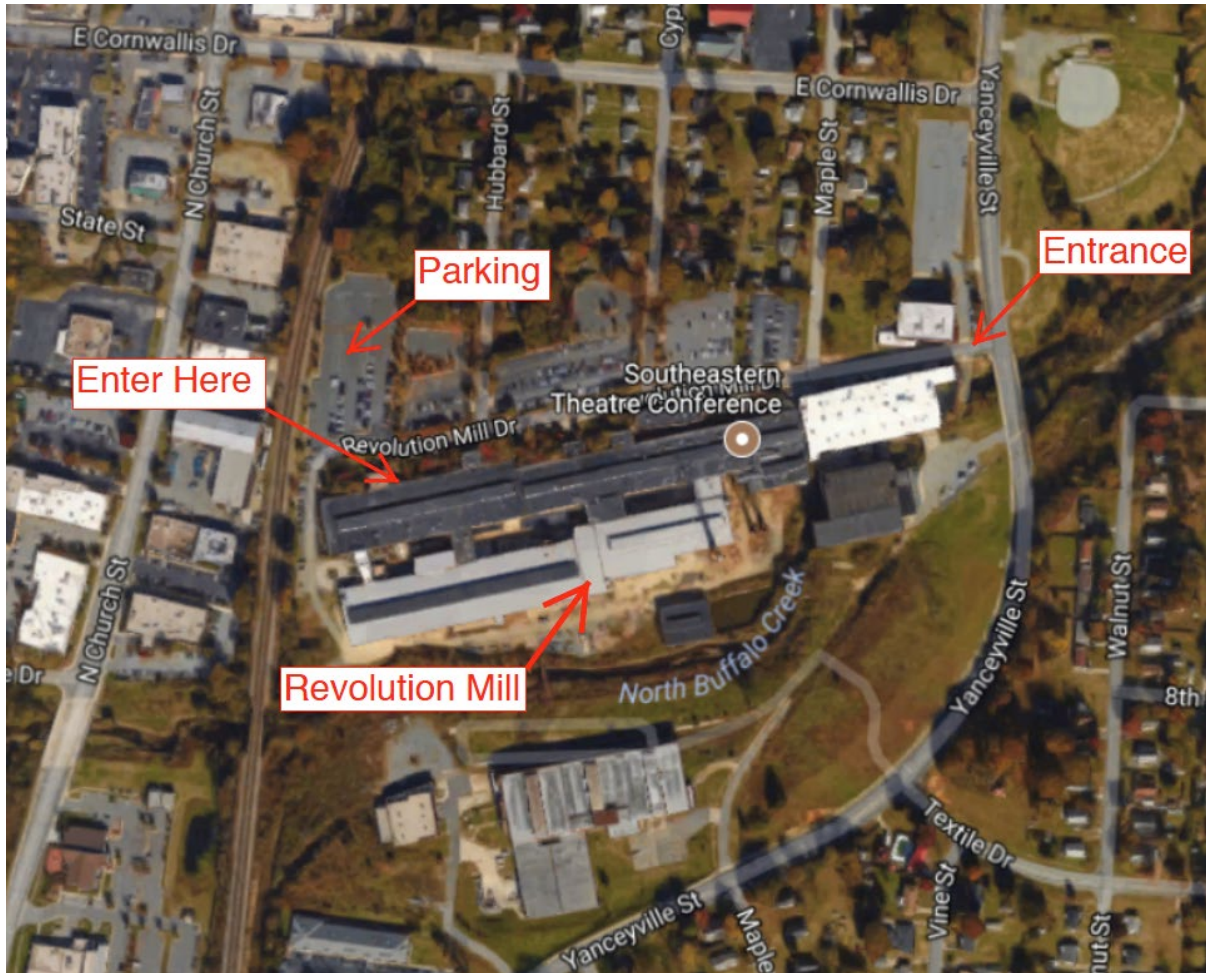
Parking is available on the street (metered until 6:00 pm) or in parking decks nearby.

Revolution Mill – Wednesday Meeting Location

1000 Revolution Mill Drive

Greensboro, NC

<http://bit.ly/RevolutionMill>



Parking

Once you turn onto Revolution Mill Drive, continue straight and follow the LNC signs towards 1000 Revolution Mill Drive. Parking is available opposite the 1000 building entrance sign. Enter the building at the 1000 address and follow the LNC signs to the meeting space.

Undercurrent – Wednesday Night 6:30 pm Class Dinner

327 Battleground Avenue

Greensboro, NC

<http://bit.ly/UndercurrentDinner>

From the Greensboro Marriott Downtown (walking)

1. Exit the hotel onto Greene Street.
2. Turn right and walk north.
3. Walk left down Lindsay Street and turn left onto Battleground Avenue.
4. Undercurrent is in the one-story brick building on the right.

Parking

There is limited street parking around Undercurrent. A parking lot on the right side of the building has a few spots reserved for Undercurrent. It is faster and more convenient to walk.

North Carolina A&T State University Student Center Ballroom – Thursday Meeting Location

Student Center Address and Parking for Presenters

1403 John Mitchell Drive

Greensboro, NC

<http://bit.ly/NCATStatePresenterParking>

Note: Parking at Student Center for presenters only.

Class Parking—Recommended Parking Deck

102 Laurel Street

Greensboro, NC

<http://bit.ly/NCATStateClassParking>

Ballroom is on the second floor of the Student Center.

Parking

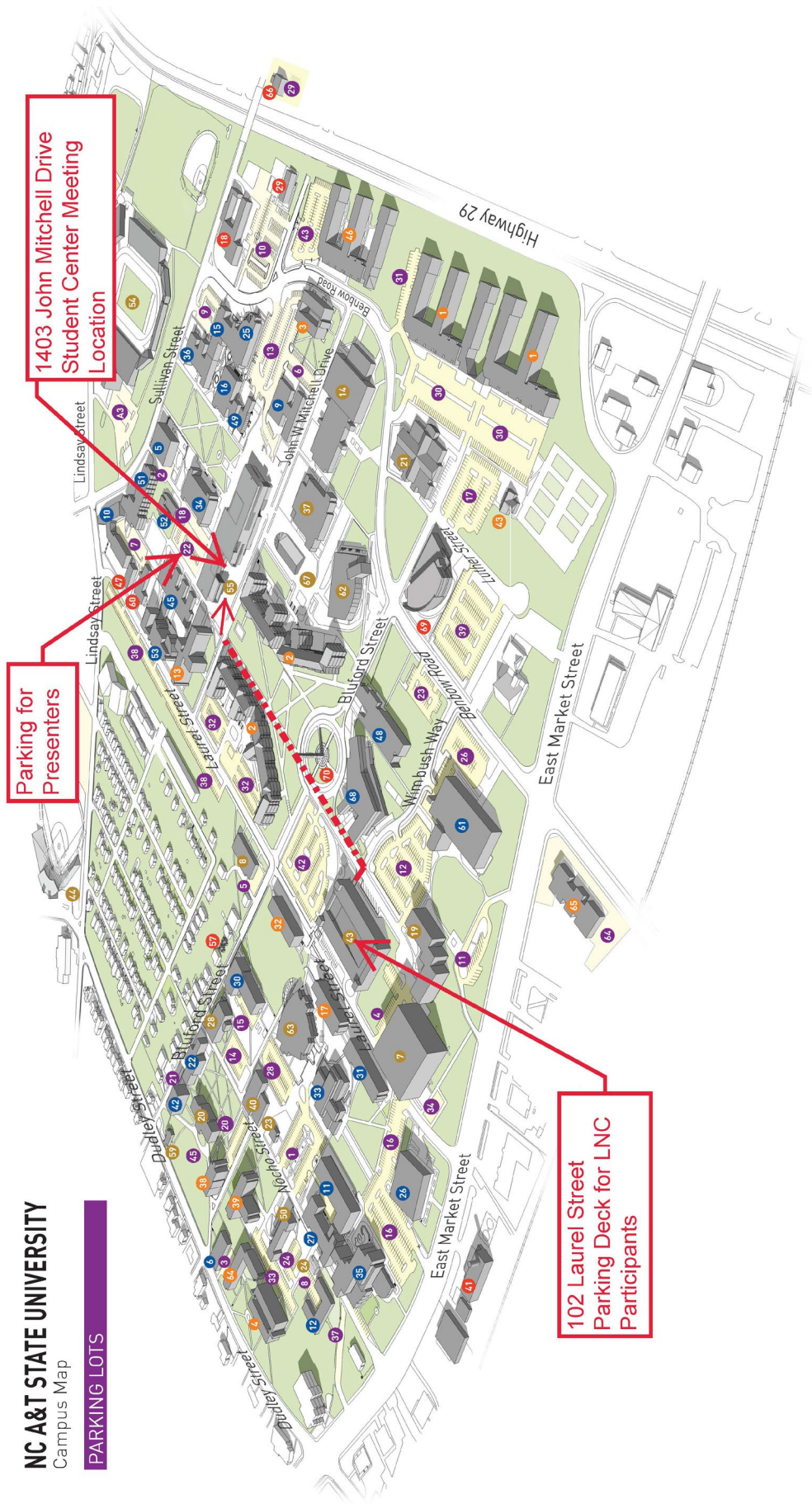
LNC presenters may park in one of the reserved spots behind the Student Center. Spots will be marked with cones and an attendant will be on site to provide assistance. The dash pass distributed prior to session must be printed and displayed.

Class members should park on levels 2 or 3 of the deck at 102 Laurel Street (#43 on the campus map). Parking validation passes will be distributed on site and should be inserted along with garage ticket upon exiting the deck at the end of the day.

See map on next page

NC A&T STATE UNIVERSITY
Campus Map

PARKING LOTS



[Revised July 31, 2015]

Questions? Call Kelly Turner at (919) 523-4336, Maggie Stroud at (919) 830-1110, Brian Etheridge at (919) 609-1113, or Emily Smith at (919) 538-4693.