

**In ONE word, how did you feel when you dropped off your child at school for the first time? If you don't have children, how did you feel when you went to school for the first time?**



We know Early Childhood matters



# Brains are Built, Not Born

- **Early experiences are built into children's bodies**—shaping brain architecture and impacting how biological systems develop
- Every experience a baby has forms a neural connection in the brain at a rate of **more than a million synapses per second** in the early years.
- **Not all neural connections will last.** Connections that get used more strengthen, and those used less fade.
- Positive early experiences **build a strong foundation** for learning and future health.



## How does NC define “early childhood”?

Birth – 8 Years-Old  
(typically through third  
grade)

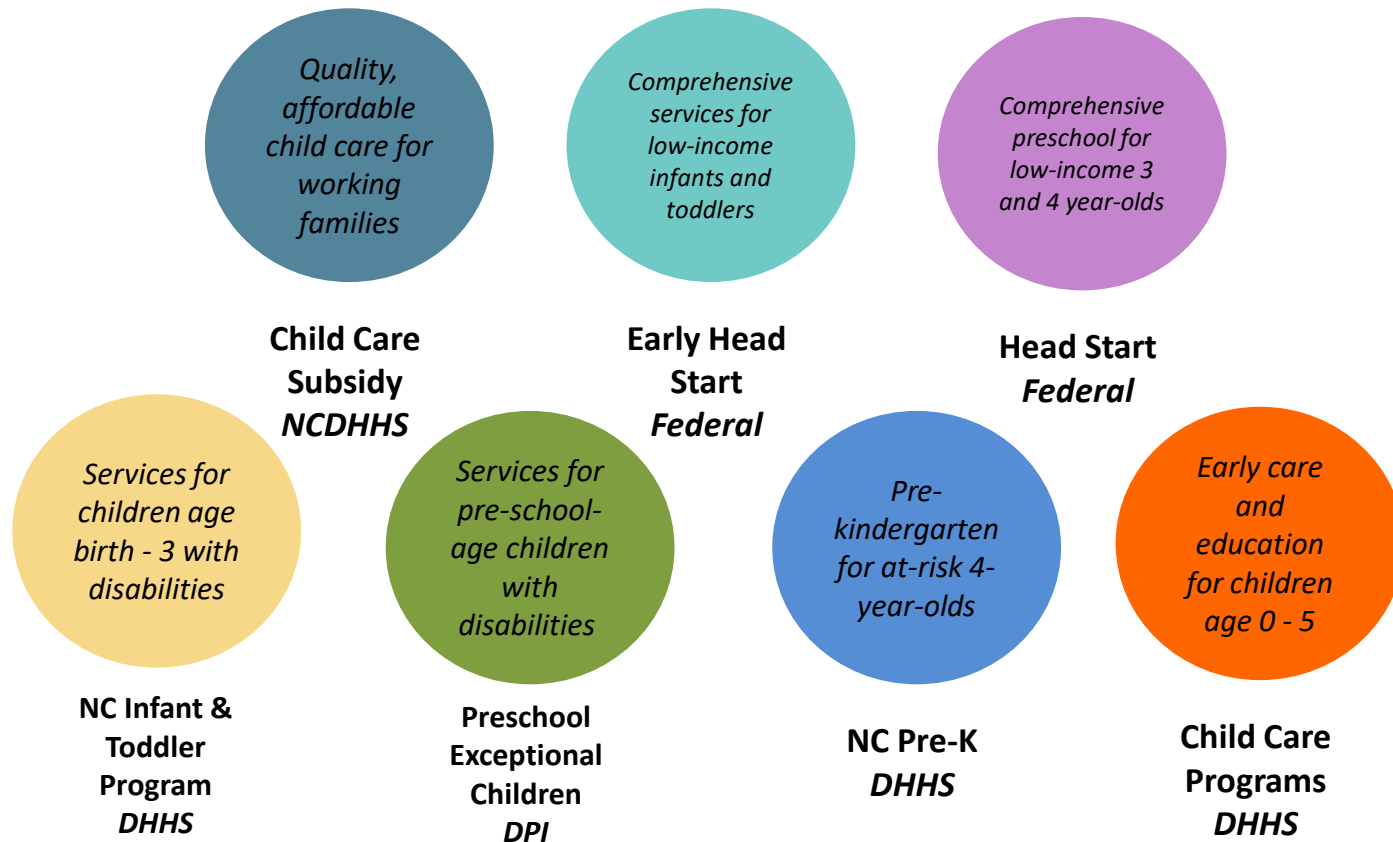


*Age Range*




*Health, Child Welfare, and  
Early Education*

# NC's Public Early Learning Programs



# Public Early Learning Programs in NC



AGE	Birth – 2 years	3 years	4 & 5 years	5 – 8 years
PROGRAMS	Child Care Subsidy (serves children through age 12)			
	Early Head Start	Head Start		
	Smart Start			
	NC Infant & Toddler Program	Preschool Exceptional Children		Exceptional Children
			NC Pre-K	
				K-12 System

# Early Care and Education Facts in North Carolina (Pre-COVID-19)



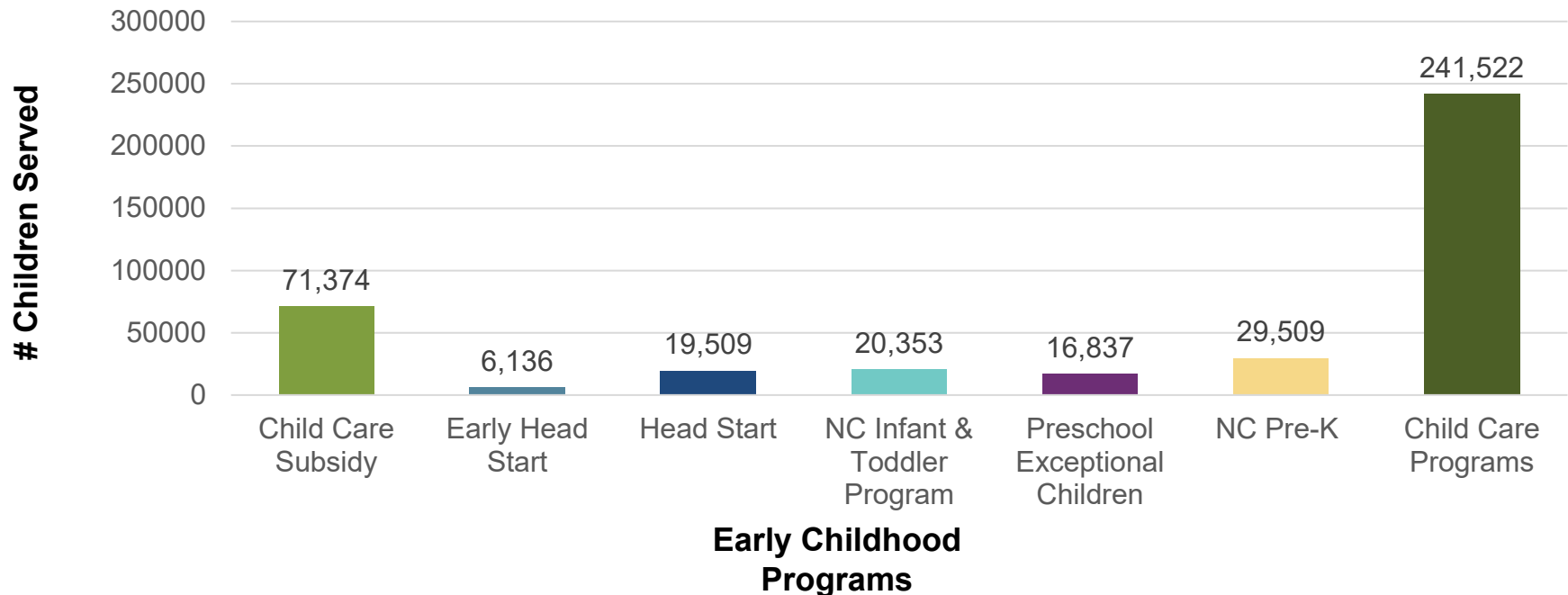
- **Total Number 0-4 in State** **610,128**
- **Total Number 5-14 in State** **1,706,866**
- **Number in Regulated Child Care** **241,522**
- **Number Receiving Subsidized Care** **71,374**
- **Number Enrolled in NC Pre-K** **29,509**

Data updated as of October 2019



# Children Served in NC's Public Early Learning Programs (Pre-COVID-19)

*Note: As a result of COVID, our child care programs are currently operating at ~50% capacity, although 90% of programs are open.*

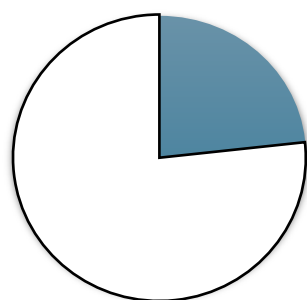


\*There are duplication among counts, as a child may receive multiple sources of funding; Data updated as of October 2019



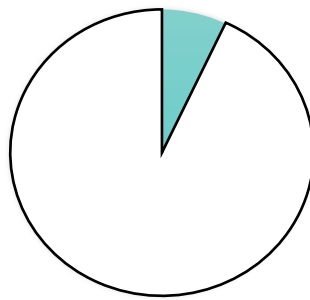
## Percent of Eligible NC Children Served (Pre-COVID-19)

*Note: As a result of COVID, our child care programs are currently operating at ~50% capacity, although 90% of programs are open.*



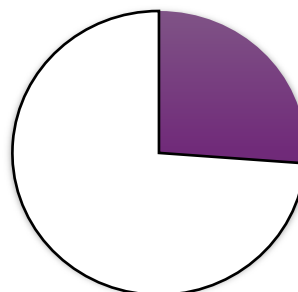
**Child Care  
Subsidy**

Serving **23%**  
of Eligible  
Children



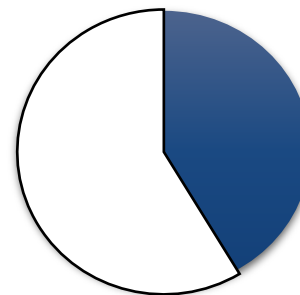
**Early Head  
Start**

Serving  
**5%**  
of Eligible  
Children



**Head Start**

Serving **28%**  
of Eligible  
Children



**NC Pre-K**

Serving **48%**  
of Eligible  
Children



## NC Early Childhood Action Plan

- 10 data-informed goals for children birth through age eight
- Targeted framework to galvanize public and private action by 2025
- Governor Roy Cooper's 2018 Executive Order called for a statewide early childhood strategic plan
- Input from more than 1,500 people representative of a diversity of perspectives, including parents, families, healthcare providers, child care providers, educators, school administrators, child advocacy groups and researchers
- Focuses on alleviating inequity across North Carolina

# At what age does the income-based achievement gap peak?





# How many children under five are on the waiting list for child care subsidies in Mecklenburg County?

Less than  
1,000

About 1,500

More than  
2,000



# How many children in the Charlotte Mecklenburg School System live in homes where Spanish is spoken?

Under  
10,000

About  
20,000

Over 30,000

# What percentage of CMS children are Hispanic/Latinx?

10%

15%

25%

# What percentage of CMS teachers are Hispanic/Latinx?

Less than  
3%

About 8%

More than  
10%



# CHARLOTTE BILINGUAL PRESCHOOL



[www.bilingualpreschool.org](http://www.bilingualpreschool.org)

# Preparing Children for Success

CHARLOTTE  
**BILINGUAL**  
PRESCHOOL



[www.bilingualpreschool.org](http://www.bilingualpreschool.org)

## Mission

---

To prepare Spanish-speaking children for success in school and life by providing superior dual language, multi-cultural early childhood education.

## Enduring vision

---

Charlotte-Mecklenburg is a place where differences in language and culture are mutually enriching, and all children have greater access to advantage and opportunity.

## Ten-year impact

---

Charlotte Bilingual Preschool will reduce the annual number of economically-marginalized, Spanish-speaking learners entering Kindergarten without experiencing dual-language early childhood education by half.



# Preschool program

---

- 5-star licensed
- Creative Curriculum
- Reggio Emilia
- Wraparound services
- Culturally appropriate food
- The Green Room
- Two sites: Hickory Grove and Thompson Family Services



# Family programs

---

- Supporting education at home
- Families as partners
- Building social capital and kinship
- Workshops and ESL
- *Creciendo Juntos*
- Workforce development approach



[www.bilingualpreschool.org](http://www.bilingualpreschool.org)



# Parentchild+

---

- GreenLight Fund's first investment in Charlotte
- National, evidence-based, home visiting
- Parent-child interactions
- Supports transition to pre-K
- Connects families to resources
- Early Learning Specialists hired from our parent community



[www.bilingualpreschool.org](http://www.bilingualpreschool.org)

# Q&A and wrap-up

CHARLOTTE  
**BILINGUAL**  
PRESCHOOL



[www.bilingualpreschool.org](http://www.bilingualpreschool.org)