

# **Community-Utility Partnerships: Traversing Peaks and Valleys**

**Hon. Julie Mayfield, MountainTrue Co-Director  
Jason Walls, Duke Energy District Manager**





# The Recipe - What's Really Important?

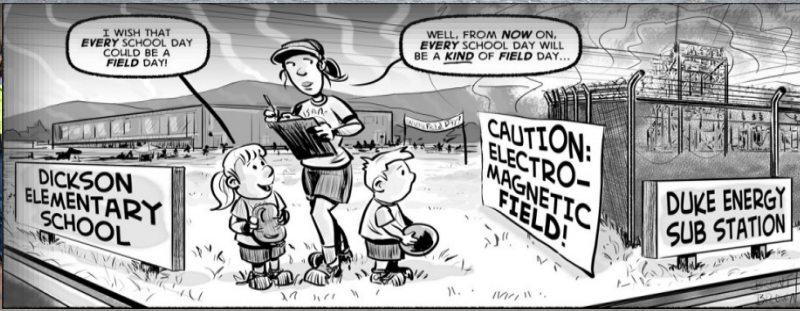


Common  
Trust  
Commitment  
Transparency  
Learn  
Patience  
Communication  
Listen  
Courage  
Friendship  
People-Matter  
Honesty  
Vision











## **A look back: Setting the Stage**

**2007** – Asheville adopts carbon reduction goal

**Nov. 2012** – Files notice of intent to sue Duke Energy

**2012 - 2015** – Asheville Beyond Coal Campaign

**4/2013** – Jason and Julie meet for their coffee

**2013** – Asheville adopts Clean Energy Resolution

**2013** – County adopts carbon reduction plan

**May 2015** – Duke Energy commits to close the coal plant and announces first modernization project

**July - Oct. 2015** – Carolina Land Coalition Campaign



# Relationship Transition

**Nov. 2015** – Duke Energy listens and revises the plan:

- No new transmission lines
- Two 270-MW natural gas units
- 190 MW peaker unit to be built in 2023
- 5 MW battery storage
- 15 MW solar
- Partnership to delay or avoid the peaker unit

**Feb. 2016** – Created Energy Innovation Task Force

**April 2016** – Rocky Mountain Institute e-Lab Accelerator

**2018-present** – Blue Horizons Project



## What Changed?

- Listened to the community - aligned plan with the community's vision.
- Took time to understand. *Understanding = Thinks + Feels*
- Willing to solve problems in a different way.
- Found areas of mutual agreement: solar, storage, retire coal, reliability, cost and replacing with local generation.
- Asked for help to solve the problem instead of asking for comments on a pre-solved solution.





# People Matter

Honesty

Courage

Commitment

Patience

Ask / Listen / Learn

Communication / Transparency

Common Vision

Friendship

# Trust is the Foundation



The background is a light gray topographic map with contour lines. A prominent blue dashed line path winds across the right side of the image, starting from the top right and moving downwards. The text is overlaid on the left side of the map.

# Case Studies

Pathways to Partnership



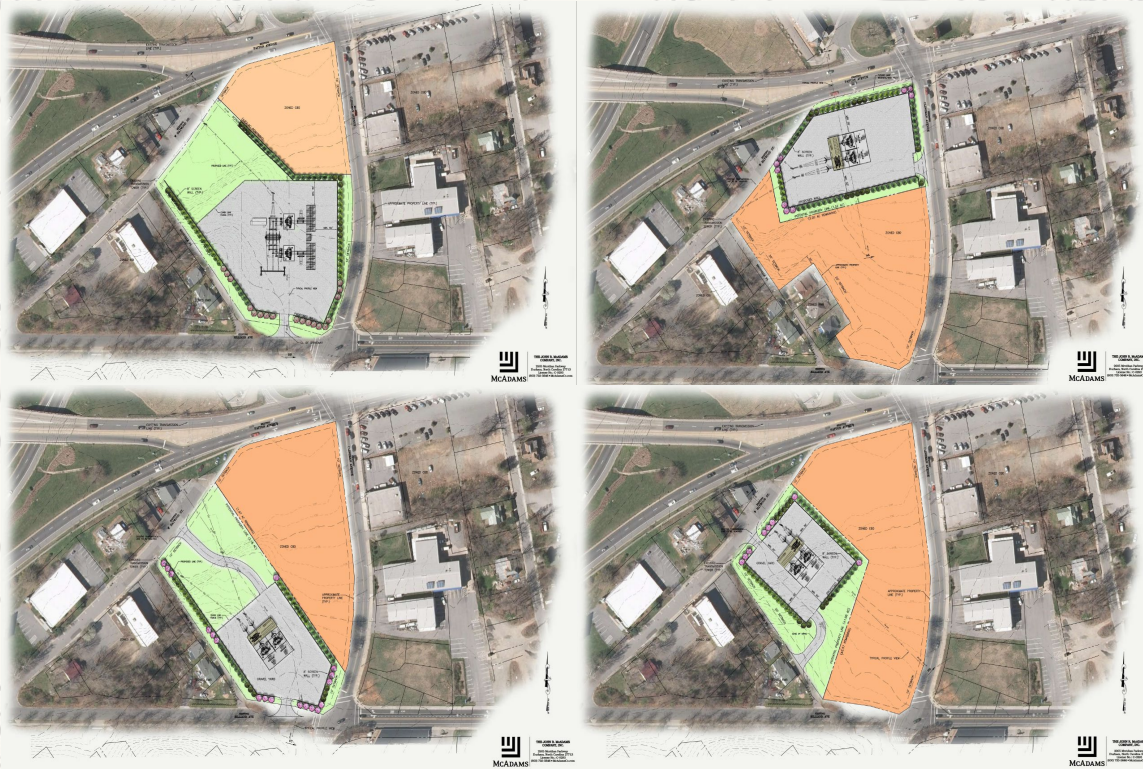
# Solving Problems Together

- Define / Agree the problem to be solved
- Identify stakeholders
- Converge the various problem statements:
  - ***“How can we build an electric substation, while at the same time protecting the main gateway into Asheville?”***
- Create guiding principles
- Develop Options
- Evaluate options based on the guiding principles
- Reach agreements





# Creating Guiding Principles Together



- Alignment with community plans: Ability to reactivate the road frontage along Patton and Clingman Ave. for future development.
- Design that makes the substation equipment invisible.
- Protect adjoining neighbors/property.
- Technically feasible to build (i.e., cost, close to transmission lines, noise, etc.)



# General Agreements to Project Advocacy

- Location
- Use advance GIS technology
- Complimentary design that is as small as possible
- Alignment with community plans
- Protects adjoining neighbors

