



Schoolhouse
of **WONDER**



Take about 30 seconds to describe your North Carolina environment to your group, ...

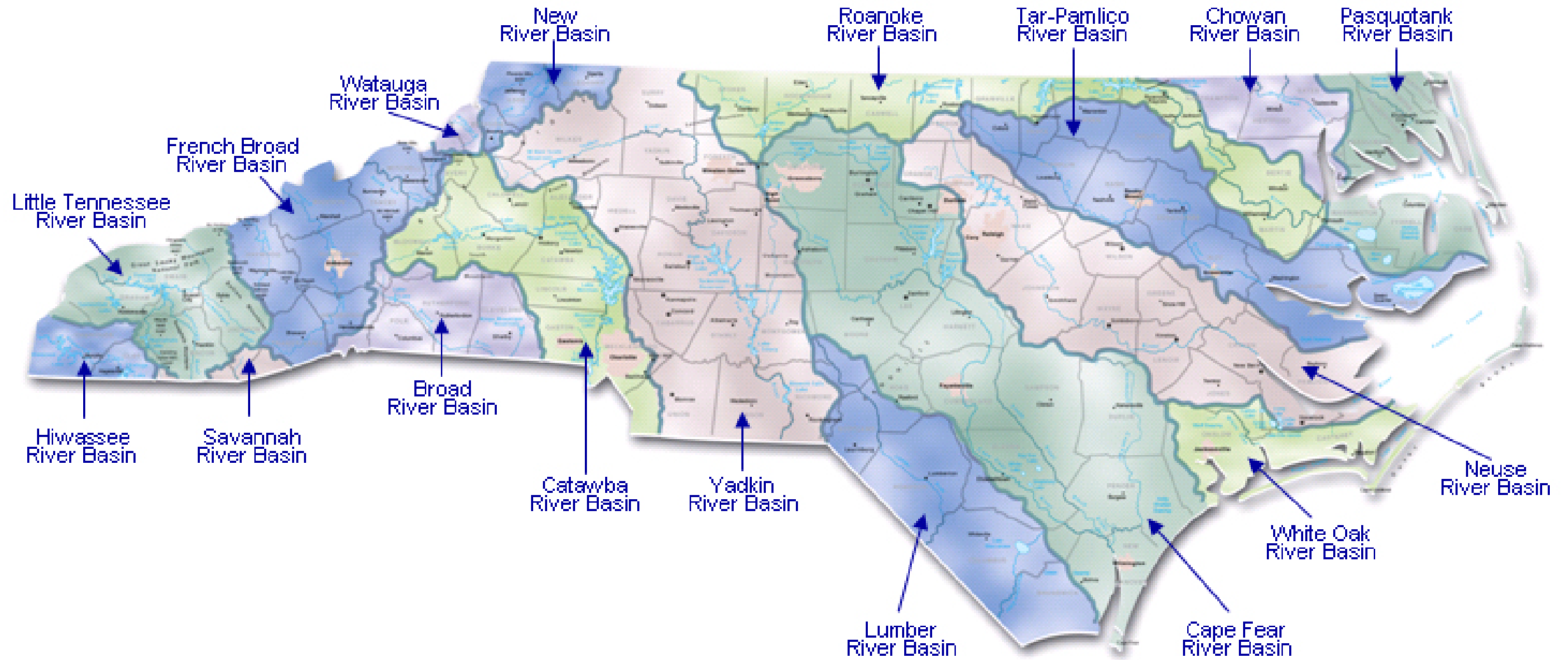
...the land

...the plants and animals

...the water features

...what you love

Watersheds of North Carolina



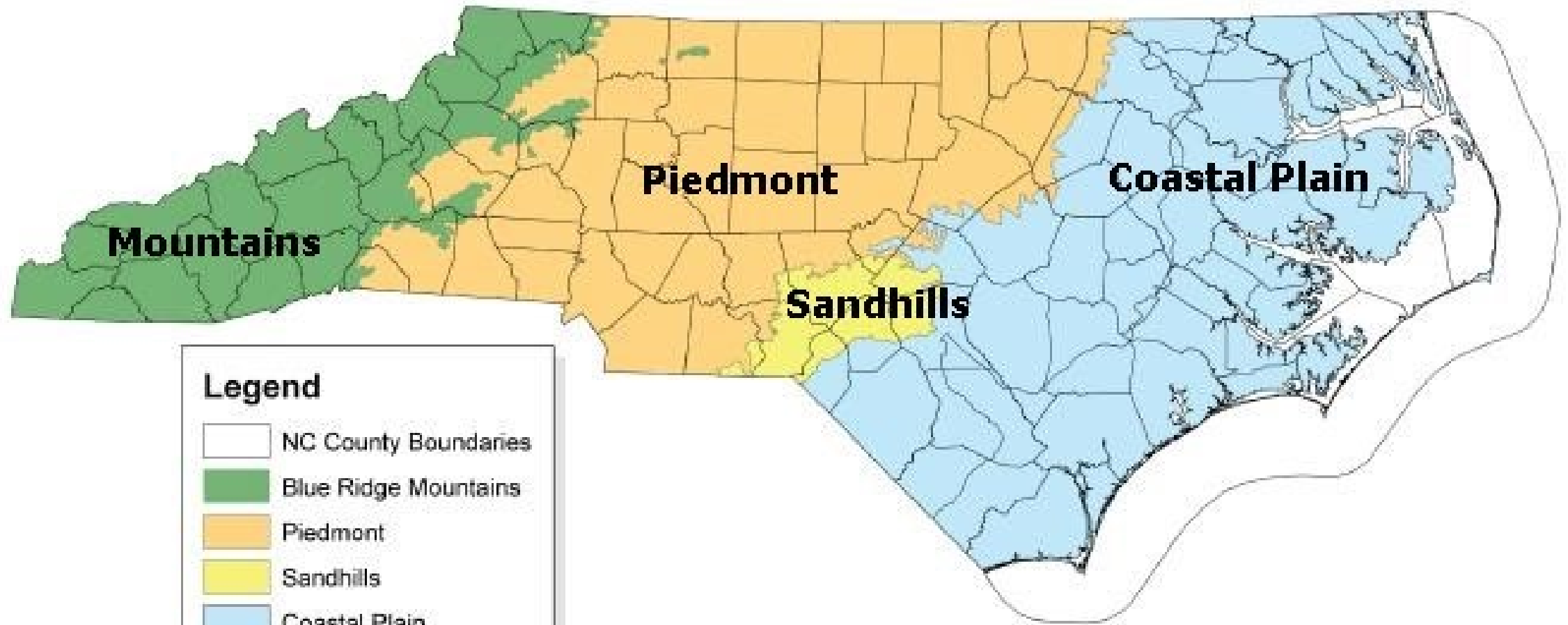


Migratory Bird Flyways

Native Americans of North Carolina 1500

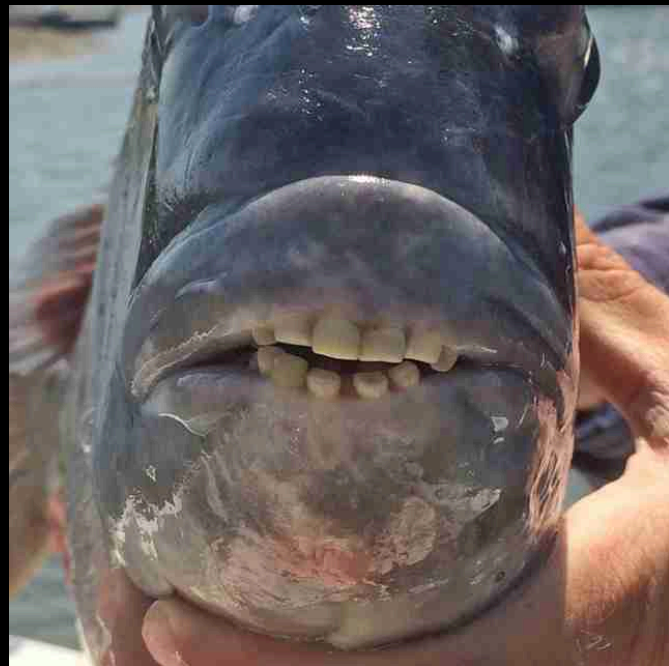


Ecoregions of North Carolina



The Beaches & The Coastal Plain









Black Skimmer







The Sandhills







The Piedmont









The Mountains



More species of salamanders exist in the southern Appalachian Mountains than anywhere else in the world - and nowhere are they more abundant.









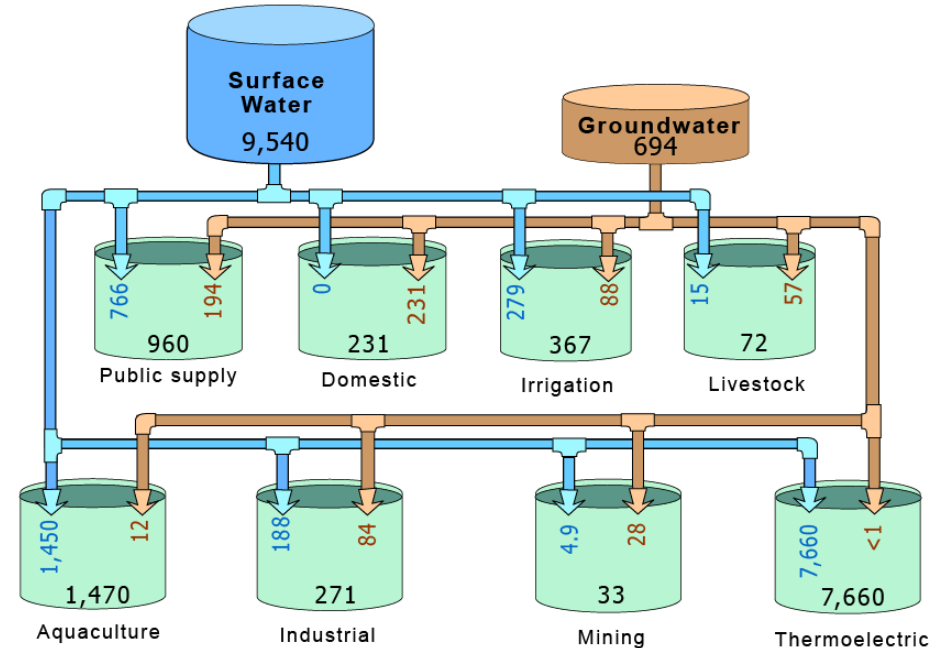
Drives our economy

- **Timber contributed \$900 Million (2016)**
- **#1 Tobacco grower in the US; (2012)**





Source and Use of Freshwater in North Carolina, 2010



Use of Water

➡ 9,600 Surface water
➡ 694 Groundwater

11,100 Total water use
 Data are in million gallons per day
 (Data are rounded)



A photograph of a sweet potato field. In the foreground, several large, reddish-brown sweet potato tubers are visible, some with their roots exposed. They are resting on a mound of dark brown soil. In the background, rows of sweet potato plants with green leaves are visible, extending into the distance. The overall scene is a lush, cultivated agricultural field.

#1 producer of Sweet Potatoes in the Country



Floods in Florence drowned 3.4 M birds, wrecking economic and environmental disaster for those communities

#2 producer of turkeys
4 in broiler chickens



#2 producer of Hogs & Pigs in the country



